

Faculties and Departments Guide For International Students **2026**



TOYO UNIVERSITY

Inheriting the "Spirit of Philosophy"

Toyo University's history started with the Philosophy Academy founded by Enryo Inoue in 1887.
What has been passed down over the 130 years since then is a spirit of having one's own philosophy,
thinking deeply to get to the essence of things, and striving to overcome any difficulty.



What is Toyo University?

Toyo University has a student body population of almost 30,000 individuals, enrolled in 14 different faculties, supporting a wide variety of educational opportunities. We continue to pass down the spirit of philosophy inherited from our founder, Enryo Inoue, which helps to tackle societal issues throughout the generations while continuing to expand. Our diverse curriculum offered, along with our global network, highly successful employment support system for students, and more, supports each student's wishes while guiding them toward their own achievable reality.



Doctrine and Progress

The three doctrines that Toyo University's educational principles are based upon are, "Possessing one's own philosophy," "Seeking the true meaning behind matters," and "Proactively taking up the mantle of solving societal issues." In the face of expanding globalization and computerization, existing values are found to be in conflict, with it becoming more difficult to define things. Our three doctrines are essential to facing these issues head-on. Toyo University has responded to the changing of times, continued to set our gazes on the challenges of a changing world, and foster new talent capable of rising to meet the challenges of current and future generations.



「知」の旅へ。

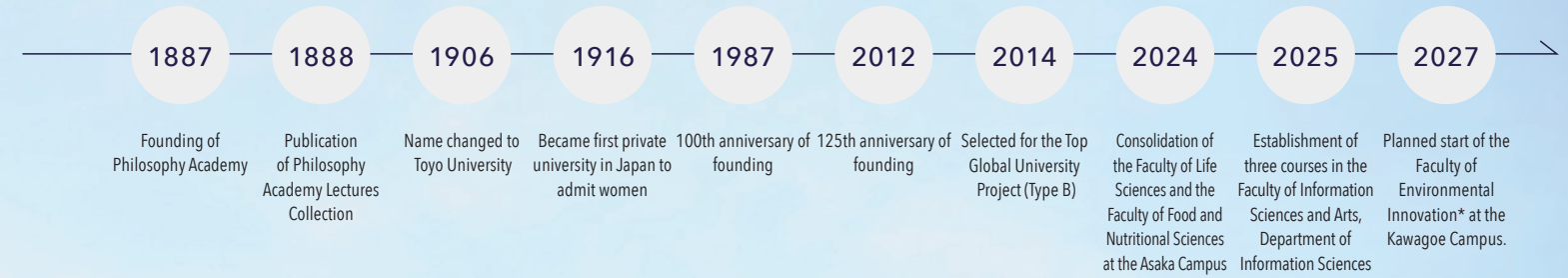
Fostering a Convergence of Knowledge

In a society that will continue to undergo rapid changes, the ability we must acquire is the capacity to think deeply and from multiple perspectives, to integrate our own knowledge with that of others, and to make comprehensive judgments. At Toyo University, we refer to this form of knowledge as "integrated knowledge." To cultivate this integrated knowledge, starting in April 2025, we will launch a new "Integrated Knowledge Education" curriculum. This program enables students to proactively combine studies in other disciplines with the specialized learning of their respective faculties to create their own educational journey.



Support for academic fees, daily living, and employment

Toyo University maintains a support system to ensure that international students can study and live in Japan with peace of mind. For example, the university offers a system that reduces or exempts the equivalent of 30% of annual tuition fees as well as various unique scholarships for international students who pay their own expenses. As for daily living, Toyo university has two international residences where Japanese and international students live together and interact with one another. In addition, the university also provides a full range of programs for business Japanese language education and other skills necessary for employment in Japan.



*This faculty is still in the establishment phase as of April 2025. The name is temporary and may change based on planning.



Toyo University's founder Enryo Inoue

Enryo Inoue was born in 1858 as the eldest son of a temple priest in Niigata Prefecture. He first encountered philosophy when he entered the newly founded University of Tokyo. When still just 29 years old, he founded the Philosophy Academy, Toyo University's predecessor, on the belief that "all knowledge is grounded in philosophy." Sensing the need to educate the masses, Enryo worked to free them from groundless superstitions by using yokai (apparitions) that were familiar to people of the time. He spoke continuously across the country about the importance of thinking and making judgments for oneself, and opened the door to education for people with no surplus money and time. Enryo traveled around the world three times and devoted his entire life to spreading philosophy and education. In 1919, while giving a lecture in Dalian, China, he collapsed and died at the age of 61.



Expanding the boundaries of education

Toyo University has four distinctive campuses, each serving as a stage for the journey of knowledge.

Students study at their respective campuses throughout their four years.

By having students from all academic years share the same campus, diverse encounters are fostered, stimulating learning.

Furthermore, in 2027, the Faculty of Environmental Innovation* is scheduled to open at the Kawagoe Campus.

Collaborating with the Faculty of Science and Engineering and the Faculty of Information Sciences and Arts, also based at Kawagoe, this campus will be reborn as "Komorebi-no-Mori no Campus"—a center for pursuing new scientific frontiers.

*This faculty is still in the establishing phase as of April 2025. The faculty name is temporary and may change based on planning.



Connecting "knowledge" building the future



Campuses and their Organizations (for students enrolled in April 2026)

Hakusan Campus

5-28-20 Hakusan, Bunkyo-ku, Tokyo

Evening course : The Hakusan Campus is home to Japan's largest evening course program.

Faculty of Letters

Department of Philosophy
Department of Eastern Philosophy and Culture
Department of Japanese Literature and Culture
Department of English and American Literature
Department of History
Department of Education (Human Development Course)
Department of Education (Primary Education Course)
Department of Education
Department of International Culture and Communication Studies

Faculty of Economics

Department of Economics
Department of International Economics
Department of Policy Studies

Faculty of Business Administration

Department of Business Administration
Department of Marketing
Department of Accounting and Finance

Faculty of Law

Department of Law
Department of Business Law

Faculty of Sociology

Department of Sociology
Department of Global Diversity Studies
Department of Media and Communications
Department of Social Psychology

Faculty of Global and Regional Studies

Department of Global Innovation Studies
Department of Regional Development Studies (Regional Development Studies Course)
Faculty of Global and Regional Studies (Regional Comprehensive Major) / Evening Course

Faculty of International Tourism Management

Department of International Tourism Management

Akabanedai Campus

1-7-11 Akabanedai, Kita-ku, Tokyo

Faculty of Information Networking for Innovation and Design

Department of Information Networking for Innovation and Design

Faculty of Design for Welfare Society

Department of Social Welfare Studies
Department of Child Studies
Department of Human Environment Design

Faculty of Health and Sports Sciences

Department of Health and Sports Sciences
Department of Nutritional Sciences

Kawagoe Campus

2100 Kujirai, Kawagoe-shi, Saitama

Faculty of Science and Engineering

Department of Mechanical Engineering
Department of Electrical, Electronic and Communications Engineering
Department of Applied Chemistry
Department of Civil and Environmental Engineering
Department of Architecture

Faculty of Information Sciences and Arts

Department of Information Sciences and Arts (Media Informatics Course)
Department of Information Sciences and Arts (Psychological and Sport Informatics Course)
Department of Information Sciences and Arts (System Informatics Course)

*Note: These 3 courses will begin in April of 2025.

ASAKA Campus

48-1 Oka, Asaka-shi, Saitama

Faculty of Life Sciences

Department of Life Sciences
Department of Biomedical Engineering
Department of Biological Resources

Faculty of Food and Nutritional Sciences

Department of Food and Life Sciences
Department of Data Science for Food Systems
Department of Nutrition and Health Sciences

April 2027

A new Faculty of Environmental Innovation* will open on the Kawagoe Campus.

This faculty will offer a comprehensive education in environmental fields, featuring a curriculum that integrates the use of ICT and big data with hands-on experiences.

Students will develop environmental creation engineering skills and science communication abilities, launching a new style of learning aimed at leading a digital and green society.

*As of April 2025, this is a proposed plan. The faculty name is tentative, and the details of the plan are subject to change.



● A new "Komorebi no Michi" path and faculty building (currently in planning; the image is a conceptual rendering).

Assistance for international students who are serious about their studies

Scholarships / Payments

Toyo University offers a 30% tuition reduction program and various scholarships for international students.
Please visit TOYOWebStyle (admission website) for details.



Tuition Reduction Program & Scholarships

Toyo University Tuition Reduction for Privately Financed International Students	Reduction equivalent to 30% of tuition fees. <small>* For the second and subsequent year, tuition fees will be reduced by applying a reduction rate of either 40%, 30% or 20% that corresponds to the student's academic performance in the previous academic year.</small>
Masajuro Shiokawa Scholarship	Payment of 100,000 yen per month (annual total of 1,200,000 yen) <small>* May not be received simultaneously with other scholarships. * This scheme is not application-based.</small>
Toyo University Scholarship for students with excellent academic records	Payment of 300,000 yen <small>* This scheme is not application-based.</small>
Toyo University SDGs Ambassador Scholarship for International Students	Applied to reduce the amount equivalent to 70% of admissions fees and tuition, facility fees, lab fees, and equipment fees. <small>*The scholarship will be applied to reduce the amount to 60% for second to fourth years. Please see page seven for more details. * May not be received simultaneously with other scholarships.</small>

Breakdown of payments for students enrolled in 2026 (scheduled)

If you enroll in the Division II Evening Course (Night), you will not be eligible to obtain "Student" residency status. (Unit: yen)

Faculty / Department			Amount Required at the Time of Enrollment	After Enrollment (October)	Tuition Fees					Total First-Year Payment Due
					Admission Fee	Tuition	General Facility and Equipment Fee	Lab Fee	Educational Enhancement Fee	
Daytime Courses	Faculty of Letters	Department of Education, Primary Education Course	825,000	575,000 (440,000)	250,000	900,000 (630,000)	250,000			1,400,000 (1,130,000)
		All departments except the Department of Education, Primary Education Course	755,000	505,000 (386,500)	250,000	790,000 (553,000)	220,000			1,260,000 (1,023,000)
	Faculty of Economics, Faculty of Business Administration, Faculty of Law		755,000	505,000 (386,500)	250,000	790,000 (553,000)	220,000			1,260,000 (1,023,000)
	Faculty of Sociology	Department of Sociology	755,000	505,000 (386,500)	250,000	790,000 (553,000)	220,000			1,260,000 (1,023,000)
		Department of Global Diversity Studies, Department of Social Psychology	762,500	512,500 (394,000)	250,000	790,000 (553,000)	220,000		15,000	1,275,000 (1,038,000)
		Department of Media and Communications	760,000	510,000 (391,500)	250,000	790,000 (553,000)	220,000		10,000	1,270,000 (1,033,000)
	Faculty of Global and Regional Studies, Faculty of International Tourism Management		790,000	540,000 (411,000)	250,000	860,000 (602,000)	220,000			1,330,000 (1,072,000)
	Faculty of Information Networking for Innovation and Design		960,000	710,000 (545,000)	250,000	1,100,000 (770,000)	320,000			1,670,000 (1,340,000)
	Faculty of Design for Welfare Society	Department of Social Welfare Studies, Department of Child Studies	805,000	555,000 (430,500)	250,000	830,000 (581,000)	240,000	40,000		1,360,000 (1,111,000)
		Department of Human Environment Design	895,000	645,000 (511,500)	250,000	890,000 (623,000)	300,000	100,000		1,540,000 (1,273,000)
	Faculty of Health and Sports Sciences	Department of Health and Sports Sciences	875,000	625,000 (494,500)	250,000	870,000 (609,000)	300,000	80,000		1,500,000 (1,239,000)
		Department of Nutritional Sciences	900,000	650,000 (512,000)	250,000	920,000 (644,000)	300,000	80,000		1,550,000 (1,274,000)
	Faculty of Science and Engineering		967,500	717,500 (554,000)	250,000	1,090,000 (763,000)	260,000	85,000		1,685,000 (1,358,000)
	Faculty of Information Sciences and Arts		915,000	665,000 (510,500)	250,000	1,030,000 (721,000)	260,000	40,000		1,580,000 (1,271,000)
	Faculty of Life Sciences, Faculty of Food and Nutritional Sciences		980,000	730,000 (577,000)	250,000	1,020,000 (714,000)	360,000	80,000		1,710,000 (1,404,000)
Division II Evening Course (Night)			445,000	265,000	180,000	430,000	100,000			710,000

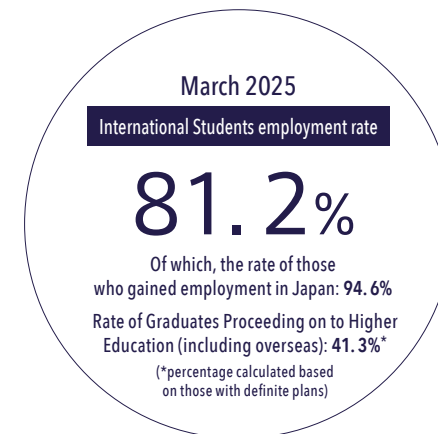
- At the time of enrollment procedures, the required payment consists of the "admission fee" and "half of the tuition (excluding the admission fee)."
- The Admission fee is charged in the first year only.
- The admission fee is a non-refundable payment made as consideration for securing the right to enroll in the faculty, department, or major to which you have been accepted at Toyo University. This fee will not be refunded under any circumstances, including if you choose to decline admission. Submitted documents will not be returned.
- The tuition mentioned above is the amount before the 30% tuition reduction. The figures in parentheses indicate the payment amount after receiving a 30% tuition reduction.
- Transfers from financial institutions outside Japan are not accepted.
- At the time of enrollment procedures, please pay the full tuition amount. If a tuition reduction is granted after enrollment, the reduced amount will be refunded. From the fall semester onward, tuition will be billed in advance at a reduced rate according to the tuition reduction percentage, provided that you meet the academic and other eligibility criteria. For details on eligibility to receive the tuition reduction, see "Support Schemes for International Students."
- The amounts listed above are provisional and may be subject to change.
- The above table includes payment information for all faculties and departments. Available faculties and departments vary depending on the type of entrance examination.
- Students enrolling in the Faculty of Letters' Department of History must pay an additional academic fee of 6,000 yen.
- Students enrolling in the Faculty of Sociology's Department of Global Diversity Studies will participate in a one-week "global diversity exercise" either in Japan or abroad during their first year. They must therefore make a separate payment to cover associated expenses (e.g., for transport, accommodations, educational materials, meals, etc.) amounting to approximately 100,000 yen for an exercise in Japan and approximately 300,000 to 350,000 yen for an exercise abroad (or approximately 350,000 to 400,000 yen for students desiring a long-term program).
- Depending on your course registration and affiliation after enrollment, additional fees for various lab sessions may be required.
- Tuition and fees may change for students who exceed the designated length of the course of study.
- Please refer to the Toyo University website for the latest fee information.

An environment for learning and living with a peace of mind

Supporting employment after graduation and daily living

Toyo University provides various support schemes and international residences to ensure that international students can study and live in Japan with a peace of mind.

Many international students go on to find employment and are playing an active part at a wide variety of companies in Japan after graduation.



Over the years, international graduates of Toyo University have found employment in a wide range of areas, including at major Japanese companies. The University provides business Japanese language education as part of its job placement support.

Major Employers (Past Results)

NTT East Japan Group, H.I.S., Kyoritsu Maintenance, All Nippon Airways, Nitori, Nissan Motor Co., Ltd., Japan Airlines, Fuji Soft, Bulgari Hotel Tokyo, The Peninsula Tokyo, Hoshino Resorts, Mitsubishi Electric, Mercari, Meiji Yasuda System Technology, Ryohin Keikaku (MUJI), Lawson, ROHM, Warner Bros. Studio Japan

Major Graduate Schools (Past Results)

Tohoku University, University of Tsukuba, University of Tokyo, Chiba University, Yokohama National University, Nagoya University, Waseda University, Keio University, Aoyama Gakuin University, Meiji University, Toyo University, Ritsumeikan University, University of Sydney, University of Manchester, University of Hong Kong

- Selected for the Ministry of Education, Culture, Sports, Science and Technology's Program for Enhancing Employment of International Students (2023 to 2025)



We support employment in Japan through a three-pronged approach: Business Japanese Education + Internships + Career Education.

Support for daily living



Study for international students Extracurricular Courses Linked to the Curriculum



We offer extracurricular courses to help students acquire advanced Japanese language skills and subjects to deepen their understanding of Japan.

Communication between international students Toyo University International Students Association (TIA)

The International Students Association is a place where international students can exchange information, consult with each other, and hold events.

Medical treatment and consultation Medical Office, Health Consultation Office, Student Support Office, Student Consultation Room

With doctors and nurses on staff, the Medical Office can handle a variety of medical needs, including emergencies. The Student Support Offices and Student Consultation Rooms have professional counselors on staff who provide consultation to students who have worries and problems.

Toyo University International Residence



Toyo University has two international residences where Japanese and international students live together and interact with each other.

AI-House HUB- 4

AI-House HUB- 4 opened on the Akabanedai Campus in March 2022. With a multipurpose studio, a common kitchen, and many other shared spaces, it is designed for interaction among residents. Exchange events and seminars for residents are held regularly.

International House *Priority for residence is given to undergraduate students in their second year or higher.

International House is conveniently located, just a 15-minute walk from the Hakusan Campus. Room types include private units and units for up to three people. They are ideal for those who want to concentrate on their studies in a quiet environment and those who want to make the most of their time. Social events for residents are also held at International House.



Choose the type of entrance examination that’s best for you.

Toyo University provides several entrance examinations for international students.

● **Toyo University Exam** <English Interview Type>

EJU score is not required. An interview will be conducted in English.

▼ Applicable to the “Toyo SDGs Ambassador Program for International Students” program

● **EJU-based Entrance Examination**

Submission of EJU score is required.

● **Hennyugaku and Tennyugaku Exams**

For persons who have completed a curriculum of at least 14 years at schools outside of Japan and persons who are currently enrolled in overseas universities (excluding junior colleges).

● **Online Entrance Examination** < Type A>< Type B>

● **Online Hennyugaku and Tennyugaku Examinations**

* Applicants can apply for and take the Online Entrance Examinations from either inside or outside Japan. Application registration and submission of application documents are completed online, and the interviews are conducted on the day of the examination using a web conferencing system. Applicants can take their examinations without coming to the exam site.

Held in November (for April enrollment) and in April (for September enrollment)	Held in November(for April enrollment) and in April (for September enrollment)
---	--

Entrance Examination for International Students (University Examination – English Interview Type)

Implementation Period	Application Period (By Mail – Postmarked Deadline)	Exam Date	Announcement of Results	Deadline for Admission Procedure	Examination Venue
October Exam	September 1 (Mon) to September 3 (Wed)	October 19 (Sun)	October 27 (Mon)	November 14 (Fri)	In principle, at the designated study campus (Note)
December exam	October 24 (Fri) to October 28 (Tue)	December 14 (Sun)	January 9 (Fri)	January 15 (Thu)	

Entrance Examination for International Students (EJU-Based)

Implementation Period	Application Period (By Mail – Postmarked Deadline)	Exam Date	Announcement of Results	Deadline for Admission Procedure	Examination Venue
October Exam	September 1 (Mon) to September 3 (Wed)	October 19 (Sun)	October 27 (Mon)	November 14 (Fri)	In principle, at the designated study campus (Note)
October / November Exam	September 1 (Mon) to September 3 (Wed)	First Stage Exam: October 19 (Sun) Second Stage Exam: November 23 (Sun)	Announcement of First Stage Examination Qualifiers December 1 (Mon)	December 12 (Fri)	
December exam	October 24 (Fri) to October 28 (Tue)	December 14 (Sun)	January 9 (Fri)	January 15 (Thu)	

Entrance Examination for International Students (Hennyugaku and Tennyugaku)

Implementation Period	Application Period (By Mail – Postmarked Deadline)	Exam Date	Announcement of Results	Deadline for Admission Procedure	Examination Venue
December exam	October 24 (Fri) to October 28 (Tue)	December 14 (Sun)	January 9 (Fri)	January 15 (Thu)	In principle, at the designated study campus (Note)

Entrance Examination for International Students (Online)

Implementation Period	Application Period	Exam Date	Announcement of Results	Deadline for Admission Procedure	Examination Venue
November Exam	September 23 (Tue) to September 26 (Fri)	November 22 (Sat), November 23 (Sun)	December 1 (Mon)	December 12 (Fri)	Entrance Exam via Web Conferencing System
April Exam	January 12 (Mon) to February 13 (Fri)	April 11 (Sat), April 13 (Mon)	April 23 (Thu)	May 7 (Thu)	

*Includes hennyugaku and tennyugaku. (Note) Depending on the faculty, entrance exam type, or schedule, the exam venue may differ from the campus where students will eventually study.

● **Toyo SDGs Ambassador Program for International Students**

Privately financed international students who are willing to and have the ability to contribute to the global society in various fashions for the achievement of SDGs and who are active in various activities related to the SDGs and those leading to globalization in and outside the university after they are admitted to our university will be certified as Toyo University International Student Ambassadors and will receive financial support including tuition and residential expenses.
This program is applicable to successful applicants for the Entrance Examinations offered to Toyo SDGs Ambassador Program for International Students who apply for this program at the time of their application and satisfy the conditions for certification etc. and who are recognized as being conspicuously excellent in their SDGs Action Plan.
Please visit the Toyo SDGs Ambassador Program website for details.

Assistance provided

(1) Tuition assistance (Payments covering admission fee, facility fee, and lab fee, and up to 100% reduction/exemption of tuition through the combination use of tuition reductions based on support schemes for international students), and waving of other various expenses

(2) Residential support (guaranteed space in AI-House or International House)

(3) Assistance with daily living and activities

(4) Assistance with efforts to strengthen Japanese language skills

*Recipients are not required to return tuitions and other assistance payments that they received from the program after graduation. (Upon advancing to their second and later years of study, students will be screened for program continuation based on their academic performance and results of their SDGs activities.)

Application Method	Applications require Internet registration. Complete the procedure by accessing TOYOWebStyle (admission website). The registration period starts three days before the first day of the application period. (The registration period for the Online Entrance Examinations starts on the first day of the application period.)
Application fee	The application fee is 10,000 yen. After completing the application registration online, pay the fee at a convenience store, or a financial institution where Pay-easy is available, using internet banking, or a credit card during the application period. (The application fee for an Online Entrance Examination must be paid by credit card.)
Application eligibility	Eligibility varies depending on the desired faculty/department (course) and entrance exam method. Refer to the Application Guide for Admissions Offered to International students for details on application eligibility and other matters concerning Hennyugaku and Tennyugaku exams.

Ensure that you read the Application Guide for Admissions Offered to International students for detailed information before applying.

The Application Guide for Admissions Offered to International students is now available on the Toyo University's admission website (in November for September enrollment). <https://www.toyo.ac.jp/nyushi/admission/>

○ If there are changes to entrance examination schedules, screening methods, or other sections covered in this booklet due to the continued spread of infectious diseases and a renewed state of emergency declaration, the changes will be announced on Toyo University's admission website (<https://www.toyo.ac.jp/nyushi/>).

Entrance Examination for International Students (University-Specific Exam/English Interview Type)

This entrance examination is designed for international students who wish to study at TOYO University. The interview is conducted in English.

Exam Date	Faculty	Department (Course)		Openings	Last Year Exam Results				Application eligibility	Subjects (Point/Value)	
					Applicants	Exam Takers	Successful Applicants	Entrants		Document Screening	English Interview
10/19	Global and Regional Studies	Regional Development Studies	Regional Development Studies	20 *	22	21	13	9	Applicants must satisfy all of the following conditions (1 through 3): 1. Must hold a nationality other than Japanese. 2. Must meet one of the following: (1) Completed (or be expected to complete by March 31, 2026) 12 years of formal education outside Japan (Note 1) (if less than 12 years, the applicant must also have completed (or be expected to complete by March 31, 2026) a preparatory education course or program at a training institution designated by Japan's Ministry of Education, Culture, Sports, Science and Technology). (2) Completed (or are expected to complete by March 31, 2026) a curriculum designated by Japan's Ministry of Education, Culture, Sports, Science and Technology as equivalent to 11 or more years of schooling in a high school-equivalent educational institution overseas (Note 1). (3) Hold an international qualification recognized for university admission, such as the International Baccalaureate, Abitur, Baccalauréat, GCE Advanced Level, International A Level, or European Baccalaureate. (4) Passed a certification exam or university entrance qualification test considered equivalent to 12 years of education in a foreign country, and recognized by Toyo University–based on official certification from that country—as possessing academic ability equal to or greater than someone who has completed 12 years of schooling; and will reach the age of 18 by March 31, 2026. (5) Any other qualifications deemed by Toyo University as equivalent or higher, and the applicant will be at least 18 years old by March 31, 2026. 3. Must be able to objectively prove English proficiency using one of the following test results (Note 2), or equivalent: (1) EIKEN (all formats, including the traditional paper-based test) (2) TEAP (4 skills) (3) TOEIC® L&R (4) TOEFL iBT™ (including Home Edition) (5) IELTS™ (6) GTEC (CBT type or Advanced type for official certification) (Note 1) "Outside Japan" refers to having a legal address located outside Japan. Even if a school within Japan follows a foreign curriculum—such as a foreign or international school—it does not qualify as "outside Japan" for eligibility purposes. (Note 2) Only test scores from January 2024 or later are valid. The following are not accepted: TOEFL ITP, TOEFL® Essentials™, IELTS™ (General Training Module), IELTS™ Indicator, or TOEIC® L&R-IP (Institutional Program).	50	100
12/14	Global and Regional Studies	Global Innovation Studies		30 *	29	27	9	9		50	100

*The number of openings includes other international student entrance exams.

Entrance Examination for International Students (EJU-Based Admission)

This is an entrance examination for international students who wish to study at Toyo University. Applicants are required to submit their scores from the Examination for Japanese University Admission for International Students (EJU).

Exam Date	Faculty	Department (Course)	Openings	Last Year Exam Results				Application eligibility	Subjects (Point Value)								
				Applicants	Exam Takers	Successful Applicants	Entrants		Toyo University Exam					EJU Scores			TOEIC® TOEFL® *
									English	Document Screening	Short Essay	Practical Exam	Interview	Japanese	Mathematics	Science	
10/19	Letters	Philosophy	5 * 1	11	9	4	3	Applicants must satisfy all of the following conditions (1 through 4) (However, applicants for the EJU-based Admissions [held in December] are exempt from requirement 4): 1. Must hold a nationality other than Japanese. 2. Must meet one of the following: (1) Completed (or be expected to complete by March 31, 2026) 12 years of formal education outside Japan (Note 1) (if less than 12 years, the applicant must also have completed (or be expected to complete by March 31, 2026) a preparatory education course or program at a training institution designated by Japan's Ministry of Education, Culture, Sports, Science and Technology). (2) Completed (or are expected to complete by March 31, 2026) a curriculum designated by Japan's Ministry of Education, Culture, Sports, Science and Technology as equivalent to 11 or more years of schooling in a high school-equivalent educational institution overseas (Note 1). (3) Hold an international qualification recognized for university admission, such as the International Baccalaureate, Abitur, Baccalauréat, GCE Advanced Level, International A Level, or European Baccalaureate. (4) Passed a certification exam or university entrance qualification test considered equivalent to 12 years of education in a foreign country, and recognized by Toyo University—based on official certification from that country—as possessing academic ability equal to or greater than someone who has completed 12 years of schooling; and will reach the age of 18 by March 31, 2026. (5) Any other qualifications deemed by Toyo University as equivalent or higher, and the applicant will be at least 18 years old by March 31, 2026. 3. Must have taken the EJU once (held in either June or November of 2024, or June or November of 2025) (Note 2). 4. Must have scored at least 300 points in the Japanese language section of the EJU, (including the Writing section) (Note 3). [In addition to the general eligibility criteria outlined above, applicants to the Faculty of Information Networking for Innovation and Design must meet both of the following requirements 1 and 2-]. (October Examination Applicants) 1. Must have taken either the TOEIC® Listening & Reading (excluding the Institutional Program: IP) or the TOEFL iBT® (including the Home Edition) administered on or after November 2023. 2. Must have undergone a Pre-admission Aptitude Screening* conducted by the INIAD Admissions Office and met the standards set by the Faculty. * Please refer to the admissions guidelines for full details about the Pre-admission Aptitude Screening. (Note 1) "Outside Japan" refers to having a legal address located outside Japan. Even if a school within Japan follows a foreign curriculum—such as a foreign or international school—it does not qualify as "outside Japan" for eligibility purposes.	100	20			80	100			
		Eastern Philosophy and Culture	5 * 1	5	4	4	4		50				100	50			
		Japanese Literature and Culture	7 * 1	19	19	5	3		50	50			100 * 2	100			
		English and American Literature	7 * 1	5	4	4	4		50	30			70	50			
		History	7 * 1	10	9	2	0		100	10			90	100			
		Education	Human Development Course	5 * 1	7	6	3		2	100	20			80	100		
	Economics	International Culture and Communication Studies	15 * 1	9	9	6	5		100				120	100			
		International Economics	20 * 1	41	39	21	15		100				100	100			
	Law	Policy Studies	Few	12	12	2	2		100				100	100			
		Law	13 * 1	26	19	7	3		100				100	100			
	Sociology	Business Law	13 * 1	18	17	7	5		100				100	100			
		Sociology	8 * 1	41	39	8	5		100				100	100			
		Global Diversity Studies	15 * 1	10	8	5	4		100				100	100			
		Media and Communications	8 * 1	31	29	8	4		100				100	100			
		Social Psychology	8 * 1	40	39	12	6		100				100	100			
		Regional Development Studies	20 * 1	18	18	8	6		100	50			100	100			
	Global and Regional Studies	International Tourism Management	20 * 1	36	35	13	11		100				100	100			
	Information Networking for Innovation and Design	Information Networking for Innovation and Design	15 * 1	1	1	1	1			100				100 * 3			100
		Social Welfare Studies	11 * 1	18	17	5	2		100				100	100			
	Design for Welfare Society	Human Environment	8 * 1	0	0	0	0			50			100 * 8	100	100		
		Health and Sports Sciences	8 * 1	16	15	4	2		100	50			100	100			
	Science and Engineering	Nutritional Sciences	5 * 1	2	1	0	0		250	50			250	450			
		Mechanical Engineering	9 * 1	36	33	15	9		100	50			100	450	200	200	
		Electrical, Electronic and Communications Engineering	6 * 1	22	12	8	5		100	50			100 * 4	450	200	200	
		Applied Chemistry	8 * 1	17	15	9	6		100	50			100 * 5	450	200	200	
		Civil and Environmental Engineering	6 * 1	3	3	3	0		100	50			100	450	200	200	
		Architecture	8 * 1	7	5	3	1		100	50			100	450	200	200	
	Information Sciences and Arts	Media Informatics	5 * 1	6	6	3	2		100	50			100	450	200		
		Information Sciences and Arts	Psychological and Sport Informatics	4 * 1	1	1	1		1	100	50			100	450	200	
	Life Sciences	System Informatics	4 * 1	18	15	4	3		100	50			100	450	200		
		Life Sciences	6 * 1	14	12	4	2		100	100			100 * 6	100		100	
		Biomedical Engineering	6 * 1	19	16	13	5		100	50			200	200	200	200	
	Food and Nutritional Sciences	Biological Resources	6 * 1	1	1	1	1		200	100			300 * 6	200		200	
		Food and Life Sciences	7 * 1	7	6	5	4		250	50			250	450			
		Data Science for Food Systems	6 * 1	1	1	1	1		250	50			250	450			
Exam Date	Faculty	Department (Course)		Openings	Last Exam Results				Application eligibility	First Stage Exam				Second Stage Exam			
First Stage Exam: 10/19	Economics	Economics		10	28	23	5	2		Toyo University Exam		EJU Score		Toyo University Exam		Interview	
										English		Japanese		Document Screening	Practical Exam		
Second Stage Exam: 11/23	Business Administration	Business Administration		16 * 1	66	62	21	12		100		100		100		100	
		Marketing		5 * 1	37	36	15	6		100		100		100		100	
		Accounting and Finance		11 * 1	18	15	6	4	100		100		100		100		

Continued >>

*Depending on the application status and exam results, the number of successful applicants may fall below the planned enrollment capacity.

Entrance Examination for International Students (EJU-Based Admission)

This is an entrance examination for international students who wish to study at Toyo University. Applicants are required to submit their scores from the Examination for Japanese University Admission for International Students (EJU)

Exam Date	Faculty	Department (Course)		Openings	Last Year Exam Results				Application eligibility	Subjects (Point Value)									
					Applicants	Exam Takers	Successful Applicants	Entrants		Toyo University Exam				EJU Scores			TOEIC® TOEFL®*		
										English	Document Screening	Short Essay	Practical Exam	Interview	Japanese	Mathematics	Science		
12/ 14	Letters	Philosophy		5* ¹	6	5	3	3	Applicants must satisfy all of the following conditions (1 through 4) (However, applicants for the EJU-based Admissions [held in December] are exempt from requirement 4): 1. Must hold a nationality other than Japanese. 2. Must meet one of the following: (1)Completed (or be expected to complete by March 31, 2026) 12 years of formal education outside Japan (Note 1) (if less than 12 years, the applicant must also have completed (or be expected to complete by March 31, 2026) a preparatory education course or program at a training institution designated by Japan's Ministry of Education, Culture, Sports, Science and Technology). (2)Completed (or are expected to complete by March 31, 2026) a curriculum designated by Japan's Ministry of Education, Culture, Sports, Science and Technology as equivalent to 11 or more years of schooling in a high school-equivalent educational institution overseas (Note 1). (3)Hold an international qualification recognized for university admission, such as the International Baccalaureate, Abitur, Baccalauréat, GCE Advanced Level, International A Level, or European Baccalaureate. (4)Passed a certification exam or university entrance qualification test considered equivalent to 12 years of education in a foreign country, and recognized by Toyo University—based on official certification from that country—as possessing academic ability equal to or greater than someone who has completed 12 years of schooling; and will reach the age of 18 by March 31, 2026. (5)Any other qualifications deemed by Toyo University as equivalent or higher, and the applicant will be at least 18 years old by March 31, 2026. 3. Must have taken the EJU once (held in either June or November of 2024, or June or November of 2025) (Note 2). 4. Must have scored at least 300 points in the Japanese language section of the EJU, (including the Writing section) (Note 3). [In addition to the general eligibility criteria outlined above, applicants to the Faculty of Information Networking for Innovation and Design must meet both of the following requirements 1 and 2:] (December Examination Applicants) 1. Must have taken either the TOEIC® Listening & Reading (excluding the Institutional Program: IP) or the TOEFL iBT® (including the Home Edition) administered on or after November 2023. 2. Must have undergone a Pre-admission Aptitude Screening* conducted by the INIAD Admissions Office and met the standards set by the faculty. * Please refer to the admissions guidelines for full details about the Pre-admission Aptitude Screening. (Note 1) *“Outside Japan” refers to having a legal address located outside Japan. Even if a school within Japan follows a foreign curriculum—such as a foreign or international school—it does not qualify as “outside Japan” for eligibility purposes. (Note 2) Only one set of EJU results will be verified via the Japan Student Services Organization. (Note 3) For EJU-based Admissions (held in December), there is no minimum required score in the Japanese language section of the EJU for eligibility (though taking the EJU is mandatory). However, applicants are expected to possess Japanese proficiency equivalent to a score of 300 or higher (including the writing section).	100				100	100				
		Eastern Philosophy and Culture		5* ¹	7	4	1	0		50				100	50				
		Japanese Literature and Culture		7* ¹	11	8	3	3		50	50			100* ²	100				
		English and American Literature		7* ¹	8	6	4	3		50	30			70	50				
		History		7* ¹	6	6	1	1		100	10			90	100				
		Education	Human Development Course	5* ¹	12	11	2	1		100				100	100				
		International Culture and Communication Studies		15* ¹	32	26	4	3		100				120	100				
	Economics	International Economics		20* ¹	124	94	9	8	100				100* ⁹	100					
	Business Administration	Accounting and Finance		11* ¹	52	36	10	7	100	100			100	100					
	Law	Law		13* ¹	37	28	6	4	100				100	100					
		Business Law		13* ¹	29	20	6	6	100				100	100					
	Sociology	Sociology		8* ¹	34	28	3	1	100				100	100					
		Global Diversity Studies		15* ¹	14	7	4	3	100				100	200					
		Media and Communications		8* ¹	44	38	4	2	100				100	100					
		Social Psychology		8* ¹	43	34	4	2	100				100	100					
	Global and Regional Studies	Regional Development Studies	Regional Development Studies	20* ¹	22	14	2	1	100	50			100	100					
	International Tourism Management	International Tourism Management		20* ¹	55	43	8	6	100				100	100					
	Information Networking for Innovation and Design	Information Networking for Innovation and Design		15* ¹	1	1	0	0		100			100* ³				100		
	Design for Welfare Society	Social Welfare Studies		11* ¹	14	14	6	5	100				100	100					
		Human Environment Design		8* ¹	2	2	1	1		50			100* ⁸	100	100				
	Health and Sports Sciences	Health and Sports Sciences		8* ¹	27	24	3	0		50	100		100	100					
		Nutritional Sciences		5* ¹	6	4	0	0	250	50			250	450					
	Science and Engineering	Mechanical Engineering		9* ¹	27	19	5	2	100	50			100	450	200	200			
		Electrical, Electronic and Communications Engineering		6* ¹	22	12	6	5	100	50			100* ⁴	450	200	200			
		Applied Chemistry		8* ¹	17	16	10	6	100	50			100* ⁵	450	200	200			
		Civil and Environmental Engineering		6* ¹	5	4	3	2	100	50			100	450	200	200			
		Architecture		8* ¹	5	2	2	2	100	50			100	450	200	200			
	Information Sciences and Arts	Information Sciences and Arts	Media Informatics	5* ¹	16	14	7	6	100	50			100	450	200				
			Psychological and Sport Informatics	4* ¹	5	3	1	0	100	50			100	450	200				
			System Informatics	4* ¹	22	20	3	3	100	50			100	450	200				
	Life Sciences	Life Sciences		6* ¹	16	13	2	0	100	100			100* ⁶	100		100			
		Biomedical Engineering		6* ¹	15	11	6	3	100	50			200	200	200	200			
		Biological Resources		6* ¹	6	3	3	3	200	100			300* ⁶	200		200			
	Food and Nutritional Sciences	Food and Life Sciences		7* ¹	10	7	5	4	250	50			250	450					
		Data Science for Food Systems		6* ¹	1	0	0	0	250	50			250	450					

- ※1 The number of openings includes other international student entrance exams.
- ※2 Includes an oral exam. The oral exam will concern Japanese culture and Japanese linguistics.
- ※3 Includes an oral exam. In the oral exam, questions will be asked in relation to study contents posed in the preliminary aptitude screening exam (writing materials are allowed to use).
- ※4 Includes an oral exam. The oral exam will concern mathematics and physics.
- ※5 Includes an oral exam. The oral exam will concern chemistry.
- ※6 Includes an oral exam. The oral exam will concern biology and chemistry.
- ※7 To be scored after conversion with Toyo University standards based on the original score.
- ※8 "Practical Exam" is based on a plane composition (a conceptual sketch of a theme) and expository writing (presentation of own opinions concerning the theme).
- ※9 Group interviews may be conducted in some cases.

Subject Selection for EJU-Based Admission

Faculty	Department (Course)		Examination for Japanese University Admission for International Students (EJU)						Language Used in the Exam (Mathematics / Science)
			Japanese	Mathematics		Science			
				Course 1	Course 2	Physics	Chemistry	Biology	
Science and Engineering	Mechanical Engineering		★		★	★	●	●	Free selection
	Electrical, Electronic and Communications Engineering		★		★	★	●	●	
	Applied Chemistry		★		★	★	★		
	Civil and Environmental Engineering		★		★	★	●	●	
	Architecture		★		★	★	★		
Information Sciences and Arts	Media Informatics	★	●	●					
		Psychological and Sport Informatics	★	●	●				
		System Informatics	★	●	●				
Life Sciences	Life Sciences		★				★	★	
	Biomedical Engineering		★		★	▲	▲	▲	
	Biological Resources		★				★	★	

* ★ indicates a required subject. ● indicates that 1 subject must be selected. ▲ indicates that 2 subjects must be selected from the available options
* Depending on the application status and exam results, the number of successful applicants may fall below the planned enrollment capacity.

Entrance Examination for International Students (Hennyugaku and Tennyugaku)

This is an entrance examination for international students who wish to study at Toyo University. It is intended for individuals who have completed 14 or more years of education at schools outside Japan or are currently enrolled in a foreign university (excluding junior colleges).

Exam Date	Faculty	Department (Course)		Openings	Last Year Exam Results				Application eligibility	Admission Methods				Subjects (Point Value)		
					Applicants	Exam Takers	Successful Applicants	Entrants		Hennyugaku Admission	Admission	Tennyugaku Admission	Admission	Document Screening	Interview	Written Exam
12/ 14	Business Administration	Business Administration		Few	2	2	0	0	<Hennyugaku 2nd or 3rd Year > Applicants must meet all of the following three conditions (However, applicants to the Faculty of Business Administration are exempt from condition 3): 1. Must hold a nationality other than Japanese. 2. Must have completed (or be expected to complete by March 31, 2026) at least 14 years of school education outside Japan (Note 1). 3. Must have obtained a Japanese language score of 300 or higher (combined total of Reading Comprehension, Listening Comprehension, and Listening-Reading Comprehension) on the EJU (held in November 2023, June or November 2024, or June 2025), or have passed Level N2 or higher of the Japanese Language Proficiency Test (JLPT). *Those wishing to apply to the Faculty of Information Networking for Innovation and Design must consult the Akabanedai Administrative Office before applying. [In addition to meeting conditions 1 and 2 above, applicants to the Faculty of Business Administration must meet the following condition:] Have passed Level NT of the Japanese Language Proficiency Test (JLPT). (Note 1) "Outside Japan" refers to having a legal address located outside Japan. Even if a school within Japan follows a foreign curriculum—such as a foreign or international school—it does not qualify as "outside Japan" for eligibility purposes. <Tennyugaku 3rd year> Applicants must meet all of the following conditions 1 through 3 (However, applicants to the Faculty of Business Administration are exempt from condition 3): 1. Must hold a nationality other than Japanese. 2. Must have been enrolled (or be expected to have been enrolled by March 31, 2026) in a foreign university (excluding junior colleges) for two or more years. 3. Must have obtained a Japanese language score of 300 or higher (combined total of Reading Comprehension, Listening Comprehension, and Listening-Reading Comprehension) on the EJU (held in November 2023, June or November 2024, or June 2025), or have passed Level N2 or higher of the Japanese Language Proficiency Test (JLPT). *Those wishing to apply to the Faculty of Information Networking for Innovation and Design must consult the Akabanedai Administrative Office before applying. [In addition to meeting conditions 1 and 2 above, applicants to the Faculty of Business Administration must meet the following condition:] Have passed Level NT of the Japanese Language Proficiency Test (JLPT).	○		○	○	100	100	
		Marketing		Few	0	0	0	0		○		○	○	100	100	
		Accounting and Finance		Few	1	1	0	0		○		○	○	100	100	
	Global and Regional Studies	Regional Development Studies	Regional Development Studies	Few	6	5	0	0	1. Must hold a nationality other than Japanese. 2. Must have been enrolled (or be expected to have been enrolled by March 31, 2026) in a foreign university (excluding junior colleges) for two or more years. 3. Must have obtained a Japanese language score of 300 or higher (combined total of Reading Comprehension, Listening Comprehension, and Listening-Reading Comprehension) on the EJU (held in November 2023, June or November 2024, or June 2025), or have passed Level N2 or higher of the Japanese Language Proficiency Test (JLPT). *Those wishing to apply to the Faculty of Information Networking for Innovation and Design must consult the Akabanedai Administrative Office before applying. [In addition to meeting conditions 1 and 2 above, applicants to the Faculty of Business Administration must meet the following condition:] Have passed Level NT of the Japanese Language Proficiency Test (JLPT). <Tennyugaku 2nd year> Applicants must meet all of the following conditions 1 through 3 (However, applicants to the Faculty of Business Administration are exempt from condition 3): 1. Must hold a nationality other than Japanese. 2. Must have been enrolled (or be expected to have been enrolled by March 31, 2026) in a foreign university (excluding junior colleges) for two or more years. 3. Must have obtained a Japanese language score of 300 or higher (combined total of Reading Comprehension, Listening Comprehension, and Listening-Reading Comprehension) on the EJU (held in November 2023, June or November 2024, or June 2025), or have passed Level N2 or higher of the Japanese Language Proficiency Test (JLPT). *Those wishing to apply to the Faculty of Information Networking for Innovation and Design must consult the Akabanedai Administrative Office before applying.	○		○	○	50	100	
		Information Networking for Innovation and Design		Few	0	0	0	0		○	○	○	○	100	100	200* ²
	Information Sciences and Arts	Information Sciences and Arts	Media Informatics	Few	—	—	—	—	1. Must hold a nationality other than Japanese. 2. Must have been enrolled (or be expected to have been enrolled by March 31, 2026) in a foreign university (excluding junior colleges) for two or more years. 3. Must have obtained a Japanese language score of 300 or higher (combined total of Reading Comprehension, Listening Comprehension, and Listening-Reading Comprehension) on the EJU (held in November 2023, June or November 2024, or June 2025), or have passed Level N2 or higher of the Japanese Language Proficiency Test (JLPT). *Those wishing to apply to the Faculty of Information Networking for Innovation and Design must consult the Akabanedai Administrative Office before applying.		○		○	50	100	
			Psychological and Sport Informatics													
			System Informatics													
	Life Sciences	Biological Resources		Few	0	0	0	0	[In addition to meeting conditions 1 and 2 above, applicants to the Faculty of Business Administration must meet the following condition:] Have passed Level NT of the Japanese Language Proficiency Test (JLPT).		○		○	100	100* ¹	

- ※1 The interview includes an oral examination. The oral examination covers topics in biology and chemistry.
- ※2 Depending on the application status and exam results, the number of successful applicants may fall below the planned enrollment capacity.
- ※3 Information Science (100 points) and Mathematics (100 points). For details on the scope of questions, please refer to the INIAD Admissions Office website (https://www.iniad.org/hentennyu/).

Application documents

All submitted documents must be prepared in Japanese, English, or Chinese.

If a document is written in another language, it must be accompanied by a translation that has been certified by a public agency or Japanese-language school.

Application Forms (1) and (2) can be printed out following completion of the online application registration procedure. Please print out the Résumé and Reasons for Application forms from Toyo University's admission website (after the Application Guide for Admissions Offered to International Applicants from Overseas is issued).

Items to be submitted by all applicants	1. Application Form (1) 2. Application Form (2) 3. Résumé (prescribed form) 4. Reason for Application (prescribed form)		5. Certificate of graduation (or expected graduation) from a secondary education institution (equivalent to a high school in Japan) 6. Academic transcript from a secondary education institution (equivalent to a high school in Japan) 7. Residence certificate	
	● EJU score certificate or score report		Only applicants for the EJU-based entrance exam	
Items to be submitted by relevant applicants only	● Certificate of completion (expected completion) of a preparatory education curriculum		Relevant applicants only	
	● Certification Documents: International Baccalaureate, Abitur, Baccalauréat, GCE Advanced Level, International A Level, or European Baccalaureate.		Only applicants falling under eligibility requirement 2.(3)	
	● Documents concerning English-language ability		Only applicants for the Faculty of Global and Regional Studies	
	● Score report for TOEIC® L&R (excluding IP (Institutional Program)) TOEFL iBT® (including the Home Edition) score notification		Only applicants for the Faculty of Information Networking for Innovation and Design	
	● Preliminary aptitude screening exam certificate		Only applicants for the Faculty of Information Networking for Innovation and Design	

Entrance Examination for International Students (Online-Based)

This entrance exam is designed for international students who wish to study at Toyo University. Applications and testing can be completed from either inside or outside Japan.

Exam Date	Faculty	Department (Course)	Openings	Last Year Exam Results				Type	Number of students Certified in Toyo SDGs Ambassador Program for International Students	Application eligibility	Document Screening	Subjects (Point Value)				
				Applicants	Exam Takers	Successful Applicants	Entrants					Japanese	Mathematics	Science	Interview **	
11/22・11/23	Letters	International Culture and Communication Studies ★	15 * 1	5	5	4	3	Type B	Few	<Type A> Applicants must satisfy all of the following conditions (1 through 4): 1. Must hold a nationality other than Japanese. 2. Must meet one of the following: (1)Completed (or be expected to complete by March 31, 2026) 12 years of formal education outside Japan (Note 1) (if less than 12 years, the applicant must also have completed (or be expected to complete by March 31, 2026) a preparatory education course or program at a training institution designated by Japan's Ministry of Education, Culture, Sports, Science and Technology). (2)Completed (or are expected to complete by March 31, 2026) a curriculum designated by Japan's Ministry of Education, Culture, Sports, Science and Technology as equivalent to 11 or more years of schooling in a high school-equivalent educational institution overseas (Note 1). (3)Hold an international qualification recognized for university admission, such as the International Baccalaureate, Abitur, Baccalauréat, GCE Advanced Level, International A Level, or European Baccalaureate. (4)Passed a certification exam or university entrance qualification test considered equivalent to 12 years of education in a foreign country, and recognized by Toyo University—based on official certification from that country—as possessing academic ability equal to or greater than someone who has completed 12 years of schooling; and will reach the age of 18 by March 31, 2026. (5)Any other qualifications deemed by Toyo University as equivalent or higher, and the applicant will be at least 18 years old by March 31, 2026. 3. Applicants must meet one of the following English proficiency standards (Note 2), or an equivalent: ・ TOEFL iBT® (including Home Edition): 79 or higher ・ IELTS™: 6.0 or higher ・ TOEIC® Listening & Reading: 780 or higher 4. Applicants must designate the university (and their desired department/major) as their first-choice and genuinely intend to enroll. (Note1)"Outside Japan" refers to having a legal address located outside Japan. Even if a school within Japan follows a foreign curriculum—such as a foreign or international school—it does not qualify as "outside Japan" for eligibility purposes. (Note2)Only scores from English proficiency tests taken on or after November 1, 2023 will be considered valid. The following tests are not accepted: TOEFL ITP®, TOEFL® Essentials™, IELTS™ (General Training Module), IELTS™ Indicator, and TOEIC® L&R-IP (Institutional Program) <Type B> Applicants must meet all of the following conditions 1 through 5 (However, applicants to the Faculty of Business Administration are exempt from condition 5): 1. Must hold a nationality other than Japanese. 2. Must meet one of the following: (1)Completed (or be expected to complete by March 31, 2026) 12 years of formal education outside Japan (Note 1) (if less than 12 years, the applicant must also have completed (or be expected to complete by March 31, 2026) a preparatory education course or program at a training institution designated by Japan's Ministry of Education, Culture, Sports, Science and Technology). (2)Completed (or are expected to complete by March 31, 2026) a curriculum designated by Japan's Ministry of Education, Culture, Sports, Science and Technology as equivalent to 11 or more years of schooling in a high school-equivalent educational institution overseas (Note 1). (3)Hold an international qualification recognized for university admission, such as the International Baccalaureate, Abitur, Baccalauréat, GCE Advanced Level, International A Level, or European Baccalaureate. (4)Passed a certification exam or university entrance qualification test considered equivalent to 12 years of education in a foreign country, and recognized by Toyo University—based on official certification from that country—as possessing academic ability equal to or greater than someone who has completed 12 years of schooling; and will reach the age of 18 by March 31, 2026. (5)Any other qualifications deemed by Toyo University as equivalent or higher, and the applicant will be at least 18 years old by March 31, 2026. 3. Applicants must designate the university (and their desired department/major) as their first-choice and genuinely intend to enroll. 4. Applicants must have taken one of the following tests on or after November 2023: TOEFL iBT® (including Home Edition), IELTS™, or TOEIC® L&R (Note 2). 5. Must have obtained a Japanese language score of 300 or higher (combined total of Reading Comprehension, Listening Comprehension, and Listening-Reading Comprehension) on the EJU (held in November 2023, June or November 2024, or June 2025), or have passed Level N2 or higher of the Japanese Language Proficiency Test (JLPT) (Applicants to the Faculty of Science and Engineering or the Department of Biomedical Engineering in the Faculty of Life Sciences must take all required subjects in the EJU as specified for their program). [In addition to meeting conditions 1 through 4 above, applicants to the Faculty of Business Administration must meet the following condition:] Have passed Level N1 of the Japanese Language Proficiency Test (JLPT). [In addition to meeting the conditions above, applicants to the Faculty of Information Networking for Innovation and Design (INIAD) must meet the following condition:] Have undergone a preliminary aptitude screening conducted by the INIAD Admissions Office* and met the criteria established by the faculty. *For details on the preliminary aptitude screening, please refer to the Admissions Guidelines. (Note1)"Outside Japan" refers to having a legal address located outside Japan. Even if a school within Japan follows a foreign curriculum—such as a foreign or international school—it does not qualify as "outside Japan" for eligibility purposes. (Note2)The following tests are not accepted: TOEFL ITP®, TOEFL® Essentials™, IELTS™ (General Training Module), IELTS™ Indicator, and TOEIC® L&R-IP (Institutional Program)	100 * 3					
	Economics	International Economics ★	20 * 1	13	13	3	2	Type B	Few		100 * 3					
	Business Administration	Business Administration	16 * 1	5	5	2	1	Type B			100 * 3					
		Marketing	5 * 1	1	1	1	0	Type B			100 * 3					
		Accounting and Finance	11 * 1	0	0	0	0	Type B			100 * 3					
		Global Diversity Studies	15 * 1	1	1	0	0	Type B			100 * 3					
	Sociology	Media and Communications	8 * 1	8	8	3	2	Type B			100 * 3					
		Social Psychology	8 * 1	2	2	0	0	Type B			100 * 3					
		Global and Regional Studies	Global Innovation Studies ★	30 * 1	25	25	8	4	Type A		10 * 2	100 * 3				
	Regional Development Studies		Regional Development Studies ★	20 * 1	4	4	1	0	Type A		10 * 2	100 * 3				
					20 * 1	2	2	1	0		Type B	Few	100 * 3			
	International Tourism Management	International Tourism Management	20 * 1	5	5	2	1	Type B			100 * 3					
	Information Networking for Innovation and Design	Information Networking for Innovation and Design ★	15 * 1	0	0	0	0	Type B	Few		100				100 * 5	
	Design for Welfare Society	Social Welfare Studies ★	11 * 1	1	1	1	1	Type B	Few		100 * 3					
	Health and Sports Sciences	Health and Sports Sciences ★	8 * 1	3	3	2	2	Type B	Few		100 * 3					
		Nutritional Sciences ★	5 * 1	0	0	0	0	Type B	Few		100				100	
	Science and Engineering	Mechanical Engineering ★	9 * 1	2	2	2	0	Type B	Few		50	450	200	200	100	
		Electrical, Electronic and Communications Engineering	6 * 1	2	2	2	2	Type B			50	450	200	200	100 * 6	
		Applied Chemistry ★	8 * 1	1	1	1	0	Type B	Few		50	450	200	200	100	
		Civil and Environmental Engineering ★	6 * 1	0	0	0	0	Type B	Few		50	450	200		100	
Architecture ★		8 * 1	0	0	0	0	Type B	Few	50	450	200		100			
			8 * 1	0	0	0	Type B	Few	50				100			
Information Sciences and Arts	Information Sciences and Arts	Media Informatics ★	5 * 1	0	0	0	Type B	Few	50				100			
		Psychological and Sport Informatics ★	4 * 1	0	0	0	Type B	Few	50				100			
		System Informatics ★	4 * 1	4	3	1	1	Type B	Few	50				100		
Life Sciences	Life Sciences ★	6 * 1	1	1	1	1	Type B	Few	100				100 * 7			
	Biomedical Engineering ★	6 * 1	0	0	0	0	Type B	Few	50	200	200		200			
	Biological Resources ★	6 * 1	0	0	0	0	Type B	Few	100				100 * 7			
Food and Nutritional Sciences	Food and Life Sciences ★	7 * 1	0	0	0	0	Type B	Few	100				100			
	Data Science for Food Systems ★	6 * 1	0	0	0	0	Type B	Few	100				100			

- *1 The number of openings includes other international student entrance exams.
- *2 This is the number of certification openings for the entire Type A program.
- *3 Following document screening, an interview may be conducted via web conferencing system.
- *4 The interview will be conducted via a web conferencing system.
- *5 The interview may be conducted in English. It will include an oral examination, which will test knowledge of the study content covered in the preliminary aptitude screening (writing materials are allowed to use).
- *6 Includes an oral exam. The oral exam will concern mathematics and physics.
- *7 Includes an oral exam. The oral exam will concern biology and chemistry.

Required Subjects for the EJU

Faculty	Department (Course)	Examination for Japanese University Admission for International Students (EJU)						Language Used in the Exam (Mathematics / Science)
		Japanese	Mathematics		Science			
			Course 1	Course 2	Physics	Chemistry	Biology	
Science and Engineering	Mechanical Engineering	★		★	★	●	●	Free selection
	Electrical, Electronic and Communications Engineering	★		★	★	●	●	
	Applied Chemistry	★		★	★	★		
	Civil and Environmental Engineering	★		★				
	Architecture	★		★				
Life Sciences	Biomedical Engineering	★		★				

* ★ indicates a required subject. ● indicates that 1 subject must be selected.

★ Entrance Examinations Eligible for the "Toyo SDGs Ambassador Program for International Students" (See details on p.14)

Among successful applicants, those who apply for this program at the time of application and whose SDGs Action Plan is deemed particularly outstanding will be certified as Toyo University SDGs International Student Ambassadors. The program provides support such as tuition reduction and housing assistance.

* Depending on the application status and exam results, the number of successful applicants may fall below the planned enrollment capacity.

Exam Date	Faculty	Department (Course)	Openings	Last Year Exam Results				Type	Number of students Certified in Toyo SDGs Ambassador Program for International Students	Application eligibility	Subjects (Point Value)	
				Applicants	Exam Takers	Successful Applicants	Entrants				Document Screening	Interview
4/11 4/13	Global and Regional Studies	Global Innovation Studies★	30 *1	53	53	15	12	Type A	10 *2	Eligible applicants must satisfy all of the following requirements (1 to 4): 1. Applicant is a national of a country other than Japan. 2. Applicant satisfies at least one of the following requirements: (1) Applicant has completed coursework of 12 years in school education in a country other than Japan ¹ (or is expected to complete such education by September 30, 2026). [If coursework is of fewer than 12 years, applicant must have completed a preparatory education curriculum or curriculum of a training facility that is recognized by the Ministry of Education, Culture, Sports, Science and Technology (or is expected to complete the said curriculum by September 30, 2026).] (2) Applicant has completed the curriculum of a school outside Japan ¹ that is equivalent to a high school that meets certain requirements, such as having a curriculum of at least 11 years that is recognized by the Ministry of Education, Culture, Sports, Science and Technology (or is expected to complete said curriculum by September 30, 2026). (3) Applicant holds international eligibility for admission to a university, such as an International Baccalaureate, Abitur, Baccalauréat, GCEA Level, International A level, or European Baccalaureate. (4) Applicant has passed an equivalency examination of secondary education for 12 years, university entrance eligibility exam, or similar exam in a country outside Japan and also has been recognized by Toyo University as having academic ability at the same or higher level as a person who completed coursework of 12 years in school education based on an official certification issued by that country (Applicant must be the age of 18 by September 30, 2026). (5) Applicant possesses a qualification recognized by Toyo University as being equal to or exceeding the above mentioned eligibility criteria and will reach the age of 18 by September 30, 2026. 3. Applicant satisfies one of the following English proficiency requirements ² or the equivalent. • TOEFL iBT [®] (including Home Edition) score of 79 or higher • IELTS [™] score of 6.0 or higher • TOEIC [®] L&R score of 780 or higher 4. Applicant is seeking to enter Toyo University (desired department and course) as his / her first choice. (Note1) "Country other than Japan" refers to an address that is located outside of Japan. Applicants who are attending a school for foreigners, international school, or other such institution that is located within Japan do not have application eligibility even if they are enrolled in a curriculum of another country. (Note2) A valid English proficiency requirement score must be one from a test taken on or after April 1, 2024. Scores of TOEFL ITP [®] , TOEFL [®] Essentials [™] , IELTS [™] (General Training Module), IELTS [™] Indicator, and TOEIC [®] L&R-IP (Institutional Program) will not be accepted.	100 *3	
	Information Networking for Innovation and Design	Information Networking for Innovation and Design★	Few	0	0	0	0	Type B	Few	Applicants must satisfy all of the following conditions (1 through 6): 1. Must hold a nationality other than Japanese. 2. Must meet one of the following: (1) Completed (or be expected to complete by September 30, 2026) 12 years of formal education outside Japan (Note 1) (if less than 12 years, the applicant must also have completed (or be expected to complete by September 30, 2026) a preparatory education course or program at a training institution designated by Japan's Ministry of Education, Culture, Sports, Science and Technology). (2) Completed (or are expected to complete by September 30, 2026) a curriculum designated by Japan's Ministry of Education, Culture, Sports, Science and Technology as equivalent to 11 or more years of schooling in a high school-equivalent educational institution overseas (Note 1). (3) Hold an international qualification recognized for university admission, such as the International Baccalaureate, Abitur, Baccalauréat, GCE Advanced Level, International A Level, or European Baccalaureate. (4) Passed a certification exam or university entrance qualification test considered equivalent to 12 years of education in a foreign country, and recognized by Toyo University—based on official certification from that country—as possessing academic ability equal to or greater than someone who has completed 12 years of schooling; and will reach the age of 18 by September 30, 2026. (5) Any other qualifications deemed by Toyo University as equivalent or higher, and the applicant will be at least 18 years old by September 30, 2026. 3. Applicants must designate the university (and their desired department/major) as their first-choice and genuinely intend to enroll. 4. Applicants must have taken one of the following tests on or after April 2024: TOEFL iBT [®] (including Home Edition), IELTS [™] , or TOEIC [®] Listening & Reading (Note 2). 5. Applicants must have achieved a total score of 300 or higher on the Japanese section (Reading Comprehension, Listening, and Listening-Reading Combined) of the EJU (held in June or November 2024, or June or November 2025), or passed the Japanese Language Proficiency Test (JLPT) at N2 level or higher. 6. Applicants must have taken the preliminary aptitude screening conducted by the INIAD Admissions Office and satisfied the standards set by the faculty. (Note1) "Outside Japan" refers to having a legal address located outside Japan. Even if a school within Japan follows a foreign curriculum—such as a foreign or international school—it does not qualify as "outside Japan" for eligibility purposes. (Note2) The following tests are not accepted: TOEFL ITP [®] , TOEFL [®] Essentials [™] , IELTS [™] (General Training Module), IELTS [™] Indicator, and TOEIC [®] L&R-IP (Institutional Program)	100	100 *4

*1 The number of openings includes other international student entrance exams. *2 This is the number of certification openings for the entire Type A program. *3 Following document screening, an interview may be conducted via web conferencing system. *4 The interview will be conducted via a web conferencing system. It may also be conducted in English. It will include an oral examination, which will test knowledge of the study content covered in the preliminary aptitude screening (writing materials are allowed to use).

★ indicates entrance examinations eligible for the "Toyo SDGs Ambassador Program for International Students" (See details on p.14).

Application documents

The applicant should upload his/her application documents to his/her personal applicant's web page called "My Page" after completing the online application procedure.

All uploaded documents must be prepared in Japanese, English, or Chinese. If the documents are written in other languages, their original copies **must be uploaded with an official translation prepared and certified by a public agency or Japanese language school**. A translation by the applicant or a private company will not be accepted.

Refer to Application Guide for Online Admissions Offered to International Applicants for details on application documents for the Online Hennyugaku and Tennyugaku Entrance Examinations.

Items to be submitted by applicants for the Online Entrance Examination (Type A)	1. ID photo 2. Reason for Application (prescribed form) 3. Certificate of graduation (or expected graduation) from a secondary education institution (equivalent to a high school in Japan) 4. Academic transcript from a secondary education institution (equivalent to a high school in Japan) 5. Documents concerning English-language ability 6. Letter of recommendation 7. Passport 8. Certificate of completion (expected completion) of a university preparatory course (for applicable persons only) 9. Copy of International Baccalaureate degree, Abitur qualification, certificate of Baccalauréat qualification, GCE Advanced Level, International A Level, or European Baccalaureate qualification, (for only applicants falling under eligibility requirement 2. (3)). 10. Certificate of Japanese-language ability (optional) 11. SDGs Action Plan (for SDGs Ambassadors program applicants for the November and April exams only)
Items to be submitted by applicants for the Online Entrance Examination (Type B)	1. ID photo 2. Reason for Application (prescribed form) 3. Certificate of Japanese-language ability 4. Certificate of graduation (or expected graduation) from a secondary education institution (equivalent to a high school in Japan) 5. Academic transcript from a secondary education institution (equivalent to a high school in Japan) 6. Documents concerning English-language ability 7. Passport 8. Preliminary aptitude screening exam certificate (for applicants for the Faculty of Information Networking for Innovation and Design only) 9. Certificate of completion (expected completion) of a university preparatory course (for applicable persons only) 10. Copy of International Baccalaureate degree, Abitur qualification, certificate of Baccalauréat qualification, GCE Advanced Level, International A Level, or European Baccalaureate qualification, (for only applicants falling under eligibility requirement 2. (3)). 11. SDGs Action Plan (for SDGs Ambassadors program applicants only)

Entrance Examination for International Students (*Henyugaku* and *Tennyugaku* / Online-Based)

This entrance exam is intended for international students who wish to study at Toyo University. It is open to individuals who have completed 14 or more years of education at a school outside Japan, or who are currently enrolled in a foreign university (excluding junior colleges).

Exam Date	Faculty	Department (Course)	Openings	Last Year Exam Results				Application eligibility	Admission Methods					Subjects (Point Value)		
				Applicants	Exam Takers	Successful Applicants	Entrants		Hennyugaku Admission		Tennyugaku Admission		Document Screening	Interview *2		
									3rd-Year Admission	3rd-Year Admission (Malaysia)	2nd-Year Admission	3rd-Year Admission			2nd-Year Admission	
11/22 ・ 11/23	Business Administration	Business Administration	Few	0	0	0	0	<Hennyugaku 2nd or 3rd Year > Applicants must meet both of the following conditions 1 and 2: 1. Must hold a nationality other than Japanese. 2. Must have completed (or be expected to complete by March 31, 2026) 14 or more years of school education outside Japan (Note 1). [In addition to meeting conditions 1 and 2 above, applicants to the Faculty of Business Administration must meet the following condition:] Have passed Level N1 of the Japanese Language Proficiency Test (JLPT). [In addition to meeting conditions 1 and 2 above, applicants to the Department of Global Innovation, Faculty of International Studies must meet the following condition:] Must meet one of the following English proficiency standards (or equivalent): ・ TOEFL iBT® (including Home Edition): 79 or higher ・ IELTS™: 6.0 or higher ・ TOEIC® Listening & Reading: 780 or higher *Only scores from tests taken on or after November 1, 2023 are valid. The following are not accepted: TOEFL ITP®, TOEFL® Essentials™, IELTS™ (General Training Module), IELTS™ Indicator, TOEIC® L&R-IP (Institutional Program). [In addition to meeting conditions 1 and 2 above, applicants to the Faculty of Business Administration must meet the following condition:] Have passed Level N1 of the Japanese Language Proficiency Test (JLPT).	○			○	○	100 *1		
		Marketing	Few	0	0	0	0	*Only scores from tests taken on or after November 1, 2023 are valid. The following are not accepted: TOEFL ITP®, TOEFL® Essentials™, IELTS™ (General Training Module), IELTS™ Indicator, TOEIC® L&R-IP (Institutional Program). [In addition to meeting conditions 1 and 2 above, applicants to the Regional Development Studies Course, Department of Regional Development Studies, Faculty of Global and Regional Studies, and Faculty of Information Science and Arts must meet the following condition:] ・ Must have obtained a Japanese language score of 300 or higher (combined total of Reading Comprehension, Listening Comprehension, and Listening-Reading Comprehension) on the EJU (held in November 2023, June or November 2024, or June 2025), or have passed Level N2 or higher of the Japanese Language Proficiency Test (JLPT).	○			○	○	100 *1		
		Accounting and Finance	Few	0	0	0	0	(Note1)"Outside Japan" refers to having a legal address located outside Japan. Even if a school within Japan follows a foreign curriculum—such as a foreign or international school—it does not qualify as "outside Japan" for eligibility purposes. <Tennyugaku 3rd Year > Applicants must meet both of the following conditions 1 and 2: 1. Must hold a nationality other than Japanese. 2. Must have been enrolled (or be expected to have been enrolled by March 31, 2026) in a foreign university (excluding junior colleges) for two or more years. [In addition to meeting conditions 1 and 2 above, applicants to the Faculty of Business Administration must meet the following condition:] Have passed Level N1 of the Japanese Language Proficiency Test (JLPT). [In addition to meeting conditions 1 and 2 above, applicants to the Department of Global Innovation Studies, Faculty of Global and Regional Studies must meet the following condition:] Must meet one of the following English proficiency standards (or equivalent): ・ TOEFL iBT® (including Home Edition): 79 or higher ・ IELTS™: 6.0 or higher ・ TOEIC® Listening & Reading: 780 or higher *Only scores from tests taken on or after November 1, 2023 are valid. The following are not accepted: TOEFL ITP®, TOEFL® Essentials™, IELTS™ (General Training Module), IELTS™ Indicator, TOEIC® L&R-IP (Institutional Program).	○			○	○	100 *1		
	Global and Regional Studies	Global Innovation Studies	Few	2	2	2	2	[In addition to meeting conditions 1 and 2 above, applicants to the Regional Development Studies Course, Department of Regional Development Studies, Faculty of Global and Regional Studies must meet the following condition:] Must meet one of the following English proficiency standards (or equivalent): ・ TOEFL iBT® (including Home Edition): 79 or higher ・ IELTS™: 6.0 or higher ・ TOEIC® Listening & Reading: 780 or higher *Only scores from tests taken on or after November 1, 2023 are valid. The following are not accepted: TOEFL ITP®, TOEFL® Essentials™, IELTS™ (General Training Module), IELTS™ Indicator, TOEIC® L&R-IP (Institutional Program). [In addition to meeting conditions 1 and 2 above, applicants to the Regional Development Studies Course, Department of Regional Development Studies, Faculty of Global and Regional Studies must meet the following condition:] ・ Must have obtained a Japanese language score of 300 or higher (combined total of Reading Comprehension, Listening Comprehension, and Listening-Reading Comprehension) on the EJU (held in November 2023, June or November 2024, or June 2025), or have passed Level N2 or higher of the Japanese Language Proficiency Test (JLPT).	○			○	○	100 *1		
		Regional Development Studies	Regional Development Studies	Few	0	0	0	0	<Tennyugaku 2nd year> Applicants must meet both of the following conditions 1 and 2: 1. Must hold a nationality other than Japanese. 2. Must have been enrolled (or be expected to have been enrolled by March 31, 2026) in a foreign university (excluding junior colleges) for two or more years. [In addition to meeting conditions 1 and 2 above, applicants to the Faculty of Business Administration must meet the following condition:] Have passed Level N1 of the Japanese Language Proficiency Test (JLPT). [In addition to meeting conditions 1 and 2 above, applicants to the Department of Global Innovation Studies, Faculty of Global and Regional Studies must meet the following condition:] Must meet one of the following English proficiency standards (or equivalent): ・ TOEFL iBT® (including Home Edition): 79 or higher ・ IELTS™: 6.0 or higher ・ TOEIC® Listening & Reading: 780 or higher *Only scores from tests taken on or after November 1, 2023 are valid. The following are not accepted: TOEFL ITP®, TOEFL® Essentials™, IELTS™ (General Training Module), IELTS™ Indicator, TOEIC® L&R-IP (Institutional Program).	○			○	○	100 *1	
		Information Sciences and Arts	Media Informatics	Few	—	—	—	—	[In addition to meeting conditions 1 and 2 above, applicants to the Regional Development Studies Course, Department of Regional Development Studies, Faculty of Global and Regional Studies, and Faculty of Information Sciences and Arts must meet the following condition:] ・ Must have obtained a Japanese language score of 300 or higher (combined total of Reading Comprehension, Listening Comprehension, and Listening-Reading Comprehension) on the EJU (held in November 2023, June or November 2024, or June 2025), or have passed Level N2 or higher of the Japanese Language Proficiency Test (JLPT).			○		○	50	100
	Psychological and Sport Informatics															
	System Informatics															

*1 Following document screening, an interview may be conducted via web conferencing system.
*2 The interview will be conducted via a web conferencing system.

*Depending on the application status and exam results, the number of successful applicants may fall below the planned enrollment capacity.

Exam Date	Faculty	Department (Course)	Openings	Last Year Exam Results				Application eligibility	Admission Methods				Subjects (Point Value)
				Applicants	Exam Takers	Successful Applicants	Entrants		Hennyugaku Admission		Tennyugaku Admission		Document Screening
									3rd-Year Admission	2nd-Year Admission	3rd-Year Admission	2nd-Year Admission	
4/11 • 4/13	Global and Regional Studies	Global Innovation Studies	Few	2	2	1	0	<p><Third-year transfer (hennyugaku) > The applicant must satisfy all of the following requirements (1 to 3) :</p> <p>1. Applicant is a national of a country other than Japan.</p> <p>2. Applicant has completed (or is expected to complete) coursework of at least 14 years in school education in a country other than Japan' by September 30, 2026.</p> <p>3. Applicant satisfies one of the following English proficiency requirements or the equivalent.</p> <p>a. TOEFL iBT (including Home Edition)score of 79 or higher</p> <p>b. IELTS™ score of 6. 0 or higher</p> <p>c. TOEIC' L&R score of 780 or higher</p> <p>* A valid English proficiency requirement score must be one from a test taken on or after April 1, 2024. Scores of TOEFL ITP',TOEFL' Essentials™, IELTS™(General Training Module), IELTS™ Indicator, and TOEIC' L&R-IP (Institutional Program) will not be accepted.</p> <p><Third-year transfer (tennyugaku) > The applicant must satisfy all of the following requirements (1 to 3):</p> <p>1. Applicant is a national of a country other than Japan.</p> <p>2. Applicant has been enrolled (or is expected to have been enrolled) in a university (excluding junior colleges) in a country other than Japan for at least 2 years by September 30, 2026.</p> <p>3. Applicant satisfies one of the following English proficiency requirements or the equivalent.</p> <p>a. TOEFL iBT' (including Home Edition)score of 79 or higher</p> <p>b. IELTS™ score of 6. 0 or higher</p> <p>c. TOEIC' L&R score of 780 or higher</p> <p>* A valid English proficiency requirement score must be one from a test taken on or after April 1, 2024. Scores of TOEFL ITP',TOEFL' Essentials™, IELTS™(General Training Module), IELTS™ Indicator, and TOEIC'L&R-IP (Institutional Program) will not be accepted.</p> <p><Second-year transfer(tennyugaku) > Applicant must satisfy all of the following requirements (1 to 3):</p> <p>1. Applicant is a national of a country other than Japan.</p> <p>2. Applicant has been enrolled (or is expected to have been enrolled) in a university (excluding junior colleges) in a country other than Japan for at least 1 year by September 30, 2026.</p> <p>3. Applicant satisfies one of the following English proficiency requirements or the equivalent.</p> <p>a. TOEFL iBT' (including Home Edition)score of 79 or higher</p> <p>b. IELTS™ score of 6. 0 or higher</p> <p>c. TOEIC' L&R score of 780 or higher</p> <p>* A valid English proficiency requirement score must be one from a test taken on or after April 1, 2024. Scores of TOEFL ITP',TOEFL' Essentials™, IELTS™(General Training Module), IELTS™ Indicator, and TOEIC'L&R-IP (Institutional Program) will not be accepted.</p> <p>(Note1) "Country other than Japan" refers to an address that is located outside of Japan. Applicants who are attending a school for foreigners, international school, or other such institution that is located within Japan do not have application eligibility even if they are enrolled in a curriculum of another country.</p>	○		○	○	100 *1

*1 Following document screening, an interview may be conducted via web conferencing system.

★ Entrance Examinations Eligible for the Toyo SDGs Ambassador Program for International Students (See pages 11–12)

This program recognizes privately financed international students who demonstrate strong motivation and capacity to contribute to the global community in various ways aligned with the Sustainable Development Goals (SDGs). Selected students are officially certified as Toyo University SDGs International Student Ambassadors and receive support with tuition fees, housing, and other needs.

Eligibility for Support

Applicants must be privately financed international students who meet all of the following criteria:

①

Have the desire and ability to contribute to global society in various ways toward the achievement of the SDGs:

②

Will be actively involved in SDG-related activities and other globalization-linked activities inside and outside the University;

③

Have a high level of English proficiency;

④

Have a clear career plan including a postgraduate one.

Support Provided to Eligible Students

①

Tuition Support (Grant equivalent to admission fee, general facility and equipment fee, and lab fee; tuition may be reduced by up to 100% through a combination of merit-based reductions and this grant), waiver of other miscellaneous fees

②

Housing Support (Guaranteed placement in university housing such as AI-House or the International Hall)

③

Living and Activity Support

④

Japanese Language Proficiency Support

Certification Requirements

①

The applicants will satisfy one of the following English proficiency requirements:

- TOEFL iBT® (including Home Edition) Type A: Score of 94 or higher/Type B: Score of 79 or higher
- IELTS™ (Academic Module) Type A: Score of 6.5 or higher/Type B: Score of 6.0 or higher
- TOEIC® Type A: L&R score of 780 or higher and S&W score of 310 or higher/Type B: L&R score of 780 or higher

②

The applicant's "SDGs Action Plan," one of the submission documents, is particularly outstanding.

Certification Status of the Toyo SDGs Ambassador Program for International Students

November Implementation			
Type	Department (Course)	Number of Applicants	Number of Certified Students
Type A	Global Innovation Studies	8	2
	Regional Development Studies	1	1
Type B	International Culture and Communication Studies	2	1
	International Economics	1	0
	Health and Sports Sciences	1	1
	Information Sciences and Arts	1	0

April Implementation			
Type	Department (Course)	Number of Applicants	Number of Certified Students
Type A	Global Innovation Studies	26	8

Discover more about Toyo University.

TOYOWebStyle (admission website) provides a wealth of information on

Toyo University, for everything from study to entrance examinations.

By registering as a TOYOWebStyle member, you can store content that interests you
and view past exam papers with answers.

Make your start at Toyo University easier by registering as a TOYOWebStyle (admission website) member!



Learn about Studying



Sample classes on the web

Laboratory TOYOWeb Style



Learn about the Exams



Check past exam papers

Online Application

Online admission notifications

Online admissions procedures

And much more!
Check TOYOWebStyle for
more information.



Admissions Events

OpenCampus

Toyo University is holding an open campus for all prospective students. It will feature many events including faculty and department advising sessions!

Member
Registration
Required

Appointment
Required

Schedule:

August 22, 2025 (Friday) / August 23, 2025 (Saturday)

Live "Learning" Class Experiences

100 lectures from all faculties and departments will be available for the day, allowing students to sit in on classes they're interested in and experience the joy of learning with us.

Member
Registration
Required

Appointment
Required

Schedule:

June 15, 2025 (Sunday) / March 27, 2026 (Friday)

University Information Sessions Throughout Japan

Toyo University will also have booths present at University Information Sessions held across Japan. We will offer both in-person and online advice sessions regarding Toyo University.



Scan here to learn more
about locations, dates,
and venues.

How to register as a TOYOWebStyle member:

Anyone with an email address can register (no personal information such as name or address is required).
You must be a registered TOYOWebStyle member in order to apply.

- 1 Access the TOYOWebStyle (admission website).
- 2 Click on **Member Registration** and apply for registration by sending an email using the form provided.
- 3 Click on the link of the email that is sent back to you.
- 4 Complete registration by entering a password, grade, and name of high school.

Frequently Asked Questions



We've put together answers to the most common questions about the admissions we receive.

TOYOWeb Support

Online individual consultations are also available via smartphone or PC.



Make an appointment for a one-on-one consultation here

Inquiries

Submit your questions at any time using our inquiry form.



TOYO UNIVERSITY

