



# TOYO UNIVERSITY

## GUIDE BOOK 2024-2025

**P01** Message from the President  
Founding Spirits and Principles  
History and Founder, Enryo Inoue

**P02** Facts and Figures

**P03** Program for Enhancing Employment of International Students  
Inter-University Exchange Project

**P04** Toyo University's Internationalization  
—Beyond Top Global University Project

**P05** Location and Campus Facilities in and around Tokyo

**P10** Facilities

**P11** Faculties and Departments

**P12** Graduate Schools  
Research Institutions and Centers

**P13** Programs for International Students

**P15** NEST (*Nihongo* for Exchange & International Students at Toyo)

**P16** Extracurricular Japanese Courses  
Career Support for International Students

**P17** Japanese Cultural Events and Interactions with Japanese Students

**P18** Overseas Offices  
Introduction Videos of Toyo University

**P19** Partner Institutions and Consortia

**P21** Tuition and Fees

**P22** Scholarships for International Students



**TOYO UNIVERSITY**

# Message from the President

We have been committed to implementing the Toyo Global Leaders (TGL) program as part of the Toyo Global Diamonds (TGD) Initiative to promote internationalization and develop global human resources. As a result, a large number of students have been certified as global leaders and are active in the international community after graduation. In addition, the number of international students has increased by approximately 4.5 times compared to 10 years ago, and the number of overseas partner universities has exceeded 350.

Our university has been adopted by the Ministry of Education, Culture, Sports, Science and Technology (MEXT) for its Program for Enhancing Employment of International Students and Inter-University Exchange Project and plays a pioneering role in business Japanese language education.

As a university, we will continue to focus on enhancing international education in order to develop human resources that can contribute to solving problems in an increasingly complex global society.



**Etsuko Yaguchi**  
President, Toyo University

## Founding Spirits and Principles

### The Founding Spirits of Toyo University

1. The Basis of All Learning Lies in Philosophy
2. Independence and Self-Initiative
3. Integrating Knowledge and Virtue

### Toyo University's Educational Principles

#### 1. Develop your own philosophy

Instilling individuals with the ability to learn and understand diverse values and develop their own philosophy.

#### 2. Explore the depth of essence more deeply

Educating individuals who can think logically and systematically about matters of great depth without bias or prejudice.

#### 3. Take the initiative in tackling social challenges

Raising individuals who can think independently as they tackle social challenges and work to build better relationships.

## History and Founder, Enryo Inoue

### Founder of the Toyo University, Enryo Inoue, Who Showed His Great Wisdom in Diverse Fields

The history of Toyo University began in 1887 with the establishment of *Shiritsu Tetsugakukan* (Private Academy of Philosophy) by philosopher Dr. Enryo Inoue. In the early years of Japan's modernization, Enryo brought forth the idea of "philosophy as the basis of thought for Japanese people living in the new era," and showed the importance of "carrying out philosophy." He stated: "Philosophy is the study that determines the principles behind all phenomena. Politics and law, needless to say, but even fields as distant as natural science and art should be founded on philosophy." Wishing to "benefit those who are not financially well-off and those who do not have the luxury of time," Enryo sought to open the doors of *Tetsugakukan* to as many people as possible by lowering the school's tuition. He was among the first to establish a forerunner to today's system of distance learning by compiling lectures, and distributing them to students who would otherwise not have access to the educational offerings of the school. The spirit of Enryo lives on through the evening courses of today. Seeking to provide

learning opportunities to those unable to attend regular courses, Enryo went on lecture tours all over Japan, an activity that became his lifework. He gave as many as 5,291 lectures in 60 cities and 2,198 towns and villages over a period of 27 years. Moreover, with the ambition to transform "Japan as a nation of the Orient" into "Japan as a world nation," Enryo traveled around the world three times to watch and learn from other countries during the Meiji era. This reflects his passion to forge the way for Japan to enter a new age of education.



# Facts and Figures



## History

Founded in **1887.**

## Faculties & Departments / courses

For AY 2025 new enrollees

**14** faculties

**51** departments / courses

## Graduate Schools & Courses

For AY 2025 new enrollees

**15** graduate schools

**36** courses

## Double Degree Programs

as of March, 2024

**2**

## Pioneer in Education of Women

First private university in Japan  
to enroll female students

in **1916.**



## Students

as of May, 2024

**31,885**

**30,757** undergraduates

**1,128** postgraduates

## Male-to-Female Ratio among Students

**6 to 4**

## International Degree-seeking Students

as of May, 2024

**1,560**

\*Including special permanent residents

## Applicants for AY2024

**102,910** applicants

**4** th in the nation for private universities

## Alumni

as of April, 2024

**361,895**

## Employment Rate

Class of AY2023

**98.5%**



## Overseas Partner Institutions

as of July, 2024

In total: **369** agreements with **268**

institutions in **41** countries/areas

University-wide: **268**

Faculty-wide: **101**

## Student Exchange Program Partners

as of July, 2024

**168** universities and **2** consortia

## Courses Taught in English

as of March, 2024

**1,657**

**1,092** undergraduates **565** postgraduates

## Overseas Offices

as of April, 2024

**4**



## Faculty (full-time)

as of May, 2024

**803**

## Academic Year

**Spring** .....April – Early August

**Fall** .....Late September – January



## Campuses

as of April, 2024

**4**

## Number of Books

as of March, 2024

**1,536,397**



## Sports Clubs

as of April, 2024

**77**

## Sports & Cultural Groups

as of April, 2024

**229**

---

# Program for Enhancing Employment of International Students

Toyo University was selected for the Program for Enhancing Employment of International Students commissioned by the Ministry of Education, Culture, Sports, Science and Technology (MEXT) in AY2023. The three pillars of the program are Business Japanese Language Education, Internships, and Career Education, and we will support international students in finding employment in Japan.

## **For business Japanese learning, Toyo University!**

### **Acquire the Business Japanese skills you need to find a job in Japan and play an active role in the future**

Toyo University offers various levels of Japanese language courses for different purposes, including Business Japanese. Students can take courses according to their learning style, such as live or on-demand courses. We also provide subsidies for the Japanese Language Proficiency Test (JLPT) and Business Japanese Proficiency Test (BJT) to support international students who wish to find a job in Japan.

## **For Internships in Japan, Toyo University!!**


### **Expanding internship programs for international students in the Tokyo metropolitan area and regional cities**

Through on-site internships, students can learn about the corporate culture, daily life, and industries, and deepen their understanding of each region through pre and post studies. By learning about the characteristics of not only Tokyo but also various regions, students can expand their job opportunities in Japan. Private organizations from Tohoku to Kyushu, financial institutions and DX/GX promoting companies near the campus participate in the program.

## **To find a job in Japan, Toyo University!!!**

### **Providing guidance for career development starting in the first grade and establishing a comprehensive support system**

We offer Career Support Courses to help students consider employment in Japan, and regularly hold company information sessions and job search seminars for international students. In addition, we aim to develop DX human resources and entrepreneurs through interdisciplinary workshops open to students regardless of their major or campus.

 [https://www.toyo.ac.jp/academics/international-exchange/itepp\\_jp/](https://www.toyo.ac.jp/academics/international-exchange/itepp_jp/)



---

# Inter-University Exchange Project

This project was adopted by the Ministry of Education, Culture, Sports, Science, and Technology (MEXT) in AY2022. Through this project, we aim to produce business professionals who possess multicultural communication skills and global mindset, as well as a high level of Japanese language proficiency.

## **(1) Intensive study of business Japanese in a multicultural environment** (study abroad at Toyo University)

Students who have passed the Japanese Language Proficiency Test (JLPT) at level N2 or above, or who are recommended by the head of the Japanese department at the partner university, will be accepted for up to two semesters. In the Business Japanese course, students will acquire high-level practical Japanese language skills for business professionals.

## **(2) Developing business professionals with multicultural communication skills and a global mindset** (study abroad from Toyo University)


Students are sent abroad to study at a partner university or partner language school for at least one semester. Students will work as assistants in Japanese language classes and practice Project-Based Learning (PBL)\* planned before departure.

\*This is one of the active learning methods recommended by MEXT, and is a problem-solving teaching style.

## **(3) Online activities**

We offer online activities such as “Toyo Model United Nations” and “International Students Meeting” to provide rich opportunities for international exchange. Online activities are flexible to meet the needs of students who are unable to study abroad.

In these almost two years, we have expanded the number of partner universities more than double. Originally, we had 11 partner universities from 6 countries. And we have expanded to 23 partner universities from 10 countries.

 <https://www.toyo.ac.jp/contents/international-exchange/toyo-iuep/>





# Toyo University's Internationalization —Beyond Top Global University Project



Toyo University was selected by the Ministry of Education, Culture, Sports, Science and Technology (MEXT) in AY2014 for Top Global University Project and received targeted financial support for 10 years until AY2023. During this period, the entire university promoted internationalization.

The university's educational and governance reforms have been carried out under the initiative "TOYO GLOBAL

DIAMONDS—Becoming an Asian Hub University for Global Leaders" and have realized the vision of enhancing the international competitiveness of Japanese higher education. In the future, we will not stop our progress as a university committed to internationalization. Toyo University will continue to provide education that allows students to shine as "GLOBAL DIAMONDS."

## Numerical Achievements Since Selected for Top Global University Project (AY2013-AY2023)

### Number of Japanese students with overseas study experience



### Number of international degree-seeking students



### Number of exchange students based on an inter-university exchange agreement (No. of Japanese students)



### Number of overseas student exchange agreements



### Number of courses that allow students to graduate only by learning in a foreign language



### Status of translation of the syllabus into English



### Number of international students residing in a student dormitory where both Japanese and international students live

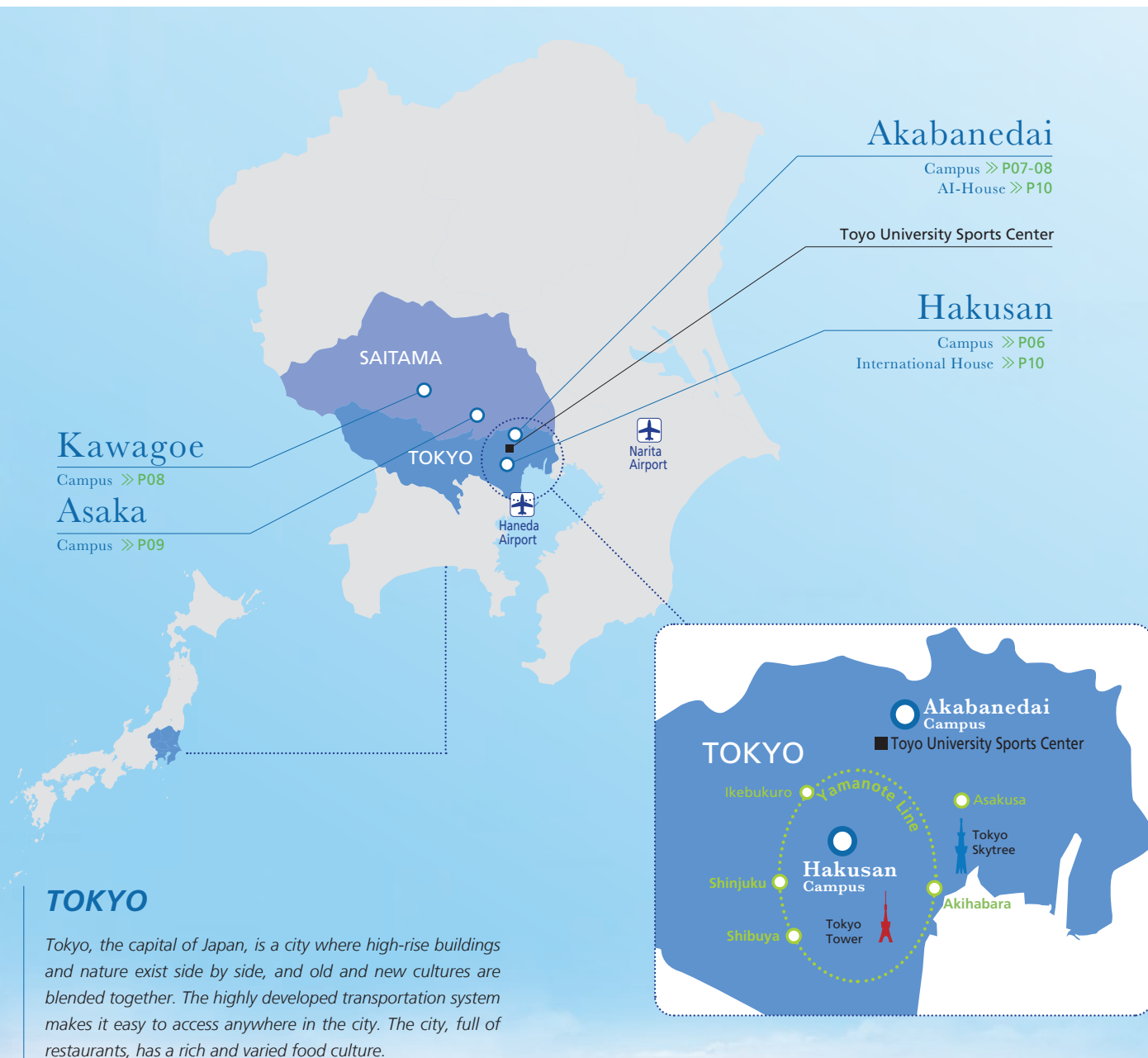


### Number of students accepted through an international transfer system



# Location and Campus Facilities in and around Tokyo

Hakusan Campus, the Toyo University's main campus, is in central Tokyo with three other campuses in the surrounding area. All campuses are conveniently located within a 10-minute walk of the closest railway station.





# HAKUSAN CAMPUS

Hakusan 5-28-20, Bunkyo-ku, Tokyo

## Faculty

Letters  
Economics  
Business Administration  
Law  
Sociology  
Global and Regional Studies  
International Tourism Management

## Graduate School

Letters  
Sociology  
Law  
Business Administration  
Economics  
Global and Regional Studies  
International Tourism Management



### Hosui-no-Mori

The main spot that could be called the face of Hakusan Campus.



### University Library

The library houses nearly one and a half million volumes and offers plenty of comfortable study areas.

## Main Campus Provides a Cosmopolitan Hub for Arts and Humanities

Toyo University's Hakusan Campus is located in the heart of Tokyo, and we are just a few subway stops away from many of its most iconic areas such as Shibuya, Akihabara, Ikebukuro, and Shinjuku. Yet Hakusan Campus is characterized by a calm atmosphere conducive to learning. Sleek, modern architecture is offset by lush trees and open spaces. Just off campus, temples and shrines, hundreds of years old, offer opportunities for quiet reflection. Like the University itself, Hakusan Campus is modern and cosmopolitan with a quiet side just around every corner. Student life at the University is as vibrant and eclectic as the city where it is located. Opportunities abound for clubs, circles, internships, volunteer programs, and other extracurricular activities.



### Building 2

It is the symbol of Hakusan Campus. It serves as a center for education and research, including classrooms, laboratories, the library, and Sky Hall.



### Building 6

This is one of the main academic buildings in Hakusan Campus.



## AKABANEDAI CAMPUS

### INIAD HUB-1

Akabanedai 1-7-11, Kita-ku, Tokyo

#### Faculty

Information Networking for  
Innovation and Design (INIAD)

#### Graduate School

Information Networking for  
Innovation and Design (INIAD)



#### 1 2 INIAD HUB-1

The exterior of the INIAD HUB-1, designed by Kengo Kuma

#### 3 Media Center

Accessible anywhere on campus via free, secure Wi-Fi, e-books make up most of the library's extensive collection.



### Equipped with State-of-the-Art Information and Communication Technology

Akabanedai Campus INIAD HUB-1 opened in 2017 and is the main campus for the Faculty and Graduate School of Information Networking for Innovation and Design. The impressive building (INIAD HUB-1) produced by Dr. Ken Sakamura is equipped with 5,000 state-of-the-art IoT devices. One unique feature of Akabanedai Campus is its "paperless environment." Digital signages are placed everywhere on campus instead of paper notice boards, and a bookless library (the Media Center) provides an environment where student can view extensive digital archives on the tablets or their own laptop computers.



## AKABANEDAI CAMPUS

### WELLB HUB-2

Akabanedai 1-7-11, Kita-ku, Tokyo

#### Faculty

Design for Welfare Society

#### Graduate School

Human Life Design, Social Welfare



#### 1 2 WELLB HUB-2

The exterior of the WELLB HUB-2 was also designed by Kengo Kuma. The interior uses lots of wood which gives warmth and comfort.

#### 3 Childcare Lab

Students from the Department of Child Studies about caregivers' roles in child development in this lab.



### Specialized Facilities Offer Practical Hands-On Learning Experiences

Opened in 2021, WELLB HUB-2, the main campus for the Faculty of Design for Welfare Society, and Graduate School of Human Life Design, Social Welfare, is designed to be suitable for variety of hands-on coursework. It has special facilities for learning healthcare, childcare, and design where students can study through experiential learning projects.





## AKABANEDAI CAMPUS

### HELSPPO HUB-3

Akabanedai 1-7-11, Kita-ku, Tokyo

Faculty

Health and Sports Sciences

Graduate School

Health and Sports Sciences



### The Base for Education and Research in the Fields of Health and Sports Science and Nutritional Science in Asia

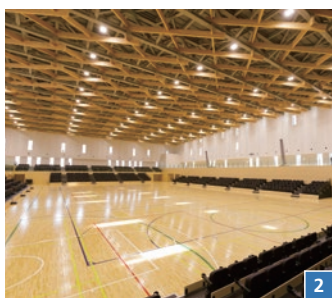
Opened in 2023, HELSPPO HUB-3, the main campus for the Faculty and Graduate School of Health and Sports Sciences. It has sports facilities, a library, and experimental and training facilities necessary for higher education and research, making it a new place of learning.

**1** The exterior of HELSPPO HUB-3 was also designed by Kengo Kuma. There are many facilities and equipment that match the characteristics of the faculty.

**2** The Arena is 2,146.59 m<sup>3</sup>, the size of three basketball courts, and has a distinctive wooden ceiling design.

**3** In the culinary practice room, you can deepen your knowledge by learning while actually cooking.

**4** The library has a collection of 270,000 volumes and over 400 reading seats.



### KAWAGOE CAMPUS

Kujirai 2100, Kawagoe-shi, Saitama

Faculty

Science and Engineering  
Information Sciences and Arts

Graduate School

Science and Engineering  
Information Sciences and Arts



### Modern Campus Situated within Lush Green Surroundings

Toyo University's Kawagoe Campus opened when the University established its first science faculty. The campus is located in a serene forest close to Kawagoe, a picturesque historic town in Saitama Prefecture. Kawagoe retains the atmosphere of Edo (the old name of Tokyo) and is nicknamed "Ko-Edo" or "Little Edo." The University runs a field research program based in Ko-Edo in collaboration with the local community, and offers open college courses contributing to the community's lifelong learning programs. The entire campus is involved in environmental protection activities, and many local residents enjoy taking walks within the lush greenery campus.

#### **1 Audiovisual Design Laboratory**

Students learn about network architecture and hardware environments while creating new content which can be presented via the theater system.

#### **2 Komorebi Path**

Komorebi ("leafy sunshine") Path is a sun-dappled promenade that connects Kawagoe's west gate with the main campus building. Komorebi Forest is where Toyo University has taken over the task of continuing to protect the precious thicket cherished by local residents. Kawagoe Campus will transform into a Smart Green Campus in 2027 with the establishment of new faculties, restructuring of courses, and construction of a new school building.





## ASAKA CAMPUS

Oka 48-1, Asaka-shi, Saitama

### Faculty

Life Sciences  
Food and Nutritional Sciences

### Graduate School

Life Sciences  
Food and Nutritional Sciences



In AY 2024, programs that used to be offered in Itakura campus started to be offered in Asaka campus. Having convenient access from Tokyo, Asaka campus is expected to become the center of comprehensive education and research in life sciences and nutrition sciences. The campus is equipped with highly advanced educational and research facilities. Symbolic zelkova trees welcome everyone who visits campus and rich green spaces contribute to creating a place for relaxation.

### 1 Main Campus Building

It is a center of innovation with a full range of facilities and equipment related to education and research.

### 2 Student Laboratory

Research on life and food is conducted in this campus.

### 3 Culinary Practice Room

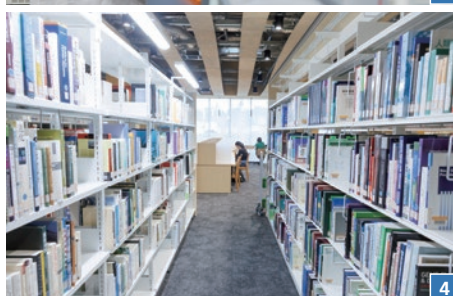
We aim to create human resources who can contribute to the realization of a sustainable society by using their expertise to solve various problems related to food and nutrition.

### 4 Library

A next-generation library with an open space including a cafeteria and free reading area, as well as a large selection of e-books.

### 5 English Lounge

We also focus on international exchange activities. Here is a fun space where everyone, regardless of nationality, can come and chat in English.





# Facilities

## Accommodations for International Students and Visiting Faculty

Toyo University has two international dormitories in Tokyo, which provide great access to campuses and major tourist spots such as Asakusa and Shinjuku. Residents will be invited to a variety of international events, seminars and other learning

opportunities. The dormitories are equipped with basic daily items, including a bed, desk and refrigerator, and Resident Assistants provide support for safe and comfortable residence life.

### International Dormitories

	AI-House HUB-4 (in Akabanedai Campus)	International House (15-min walk from Hakusan Campus)
Rooms & Rates	Single: 96,000 JPY/month Linen rental 2,300 JPY/month	Single: 81,000 JPY/month Double: 51,000 JPY/month Linen rental 2,300 JPY/month
Meals	Included* (Mon-Fri, breakfast and dinner)	Not available (kitchen available in each unit)
Major equipment	Shared bath and toilets, common kitchen, Wi-Fi, bed, desk, refrigerator, AC, laundry	Bath and toilets shared within unit, kitchen, Wi-Fi, bed, desk, refrigerator, AC, washing machine and dryer
Common spaces	Music room, multi-purpose studio, study rooms, shared living rooms and kitchens, tatami spaces	Multi-purpose hall

\*Excluding national holidays and breaks

<https://www.toyo.ac.jp/contents/international-exchange/residence/>



AI-House HUB-4



International House



International House

## Cafeterias

All of the Toyo University campuses have brilliant cafeterias spread across the campus buildings. The cafeteria located on the basement floor of Building 6 of Hakusan campus is particularly noteworthy, having received awards for its excellence. With a seating capacity of approximately 1,300 students, it is a popular spot on campus. One of its main attractions is the presence of numerous specialty restaurants offering a diverse range of delicious cuisines, including Italian, Indian, Korean, Chinese, Turkish (offering a halal food menu), and, of course, Japanese dishes. These dishes are available at reasonable prices, typically ranging from around 500-600 JPY. Cafeterias take into consideration the dietary needs of their diverse student body, providing menus that cater to those with food allergies and halal requirements. In Hakusan campus, one can find other popular restaurants in Japan, such as Subway and Marugame Seimen.

### Cafeteria Menu



- 1 Cafeteria in Building 6, Hakusan campus
- 2 SUBWAY in Building 8, Hakusan Campus
- 3 Marugame Udon and Butaya Ton-ichi newly opened in 2023



1



2



3

# Faculties and Departments [For AY2025 new enrollees]

## 14 Faculties with 51 Departments / Courses

Toyo University is committed to carrying on the legacy of its founding spirit, “the basis of all learning lies in philosophy” through diverse educational programs. All faculties offer entrance examinations for international students.

■ University-wide Study Abroad Program students may take courses offered by seven faculties on Hakusan Campus.

	Faculties	Departments	Degree Track		Admission		Campus
			JPN	ENG	Apr.	Oct.	
1	Letters	Philosophy	●		●		Hakusan
		Eastern Philosophy and Culture	●		●		
		Japanese Literature and Culture	●		●		
		English and American Literature	●		●		
		History	●		●		
		Education	●		●		
		International Culture and Communication Studies	●		●		
2	Economics	Economics	●		●		
		International Economics	●		●		
		Policy Studies	●		●		
3	Business Administration	Business Administration	●		●		
		Marketing	●		●		
		Accounting and Finance	●		●		
4	Law	Law	●		●		
		Business Law	●		●		
5	Sociology	Sociology	●		●		Hakusan
		Global Diversity Studies	●		●		
		Media and Communications	●		●		
		Social Psychology	●		●		
6	Global and Regional Studies	Global Innovation Studies		●	●	●	
		Regional Development Studies (Regional Development Studies Course)	●	●	●		
7	International Tourism Management	International Tourism Management	●		●		
8	Information Networking for Innovation and Design	Information Networking for Innovation and Design	●		●		Akabanedai
9	Design for Welfare Society	Social Welfare Studies	●		●		
		Child Studies	●		●		
		Human Environment Design	●		●		
10	Health and Sports Sciences	Department of Health and Sports Sciences	●		●		
		Department of Nutritional Sciences	●		●		
11	Science and Engineering	Mechanical Engineering	●		●		Kawagoe
		Electrical, Electronic and Communications Engineering	●		●		
		Applied Chemistry	●		●		
		Civil and Environmental Engineering	●		●		
		Architecture	●		●		
12	Information Sciences and Arts	Information Sciences and Arts	●		●		Asaka
13	Life Sciences	Life Sciences	●		●		
		Biomedical Engineering	●		●		
		Biological Resources	●		●		
14	Food and Nutritional Sciences	Food and Life Sciences	●		●		
		Data Science for Food Systems	●		●		
		Nutrition and Health Sciences	●		●		





# Graduate Schools [For AY2025 new enrollees]

## 15 Graduate Schools and 36 Courses of Study

With the aim of cultivating global citizens equipped not only with specialized skills that meet world standards but also with a strong sense of character, the Toyo University's 15 Graduate Schools and 36 Courses of Study prepare students for the challenges of an interconnected world.

	Graduate Schools	Courses	Degree Track		Admission		Campus
			JPN	ENG	Apr.	Oct.	
1	Letters	Philosophy	●		●		Hakusan
		Indian Philosophy and Buddhist Studies	●		●		
		Japanese Literature and Culture	●		●		
		Chinese Philosophy	●		●		
		English Language and Literature	●		●		
		History	●		●		
		Education	●		●		
		International Culture and Communication Studies	●	●	●		
2	Sociology	Sociology	●		●		
		Social Psychology	●		●		
3	Law	Private Law	●		●		
		Public Law and Political Science*	●		●		
4	Business Administration	Business Administration and Marketing	●		●		
		Business, Accounting and Finance	●		●	●	
5	Economics	Economics	●		●		
		Public- Private Partnership	●	●	●	●	
6	Global and Regional Studies	Global Innovation Studies		●	●	●	
		Regional Development Studies	●	●	●	●	
7	International Tourism Management	International Tourism Management	●	●	●	●	
8	Information Networking for Innovation and Design	Information Networking for Innovation and Design	●		●	●	Akabanedai
9	Social Welfare	Social Welfare	●		●		
10	Human Life Design	Human Care and Support	●		●		
		Human Life Studies	●		●		
		Human Environment Design	●		●		
11	Health and Sports Sciences	Health and Sports Sciences	●		●		
		Nutritional Sciences	●		●		
12	Science and Engineering	Advanced Mechatronics Systems	●		●	●	Kawagoe
		Electricity, Electronics and Communications	●		●	●	
		Applied Chemistry	●		●	●	
		Civil and Environmental Engineering	●		●	●	
		Architecture	●		●	●	
		Architecture, Civil and Environmental System Design	●		●	●	
13	Information Sciences and Arts	Information Sciences and Arts	●	●	●	●	Asaka
14	Life Sciences	Life Sciences	●	●	●	●	
		Biomedical Engineering	●	●	●	●	
15	Food and Nutritional Sciences	Food and Nutritional Sciences	●		●	●	

\* The name of the course is scheduled to change from the Course of Public Law in April 2025.  
(Notification of name change submitted in June 2024)

<https://www.toyo.ac.jp/academics/gstop/>



## Research Institutions and Centers

▼ Researchers Information System of  
Toyo University  
<https://ris.toyo.ac.jp/search/index.html>



- Center for Academic Research Promotion
  - Institute of Human Sciences
  - Institute of Social Sciences
  - Institute of Oriental Studies
  - Asian Cultures Research Institute
  - Institute of Regional Vitalization Studies
  - Research Institute of Industrial Technology
  - Institute of Life Innovation Studies
- Industry Government Academia Partnership Center
  - Bio-Nano Electronics Research Centre
  - Asia Public-Private Partnership Institute
  - Inoue Enryo Philosophy Center
  - Center for Global Innovation Studies
  - Information Networking for Innovation and Design Collaboration Hub for University and Business
- Research Center for Public-Private Partnership
- Center for Sustainable Development Studies
- Research Center for Development of Welfare Society
- Research Center for Biomedical Engineering

# Programs for International Students



## Degree Programs

Toyo University is home to 14 faculties comprising 51 departments / courses and 15 graduate schools comprising 36 courses. Now about 1,500 international degree-seeking students learn at Toyo University.

In addition to courses taught in Japanese, students can take

courses in other languages. In particular, the number of classes taught in English has been increasing year by year and there are 1,657 courses (565 of which are for graduate students) offered in English (in AY2024).

## Admissions

### ▼ Undergraduate Programs

<https://www.toyo.ac.jp/nyushi/en/>



### ▼ Graduate Programs

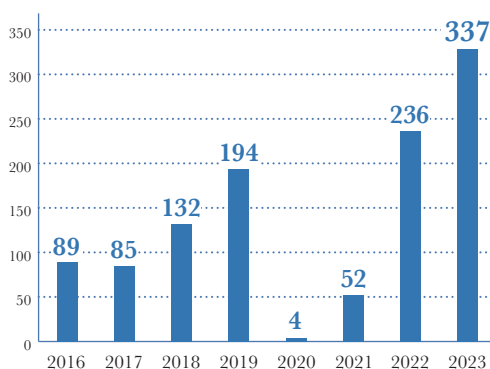
<https://www.toyo.ac.jp/academics/gadmissions/>



## Study Abroad Programs

When international students study at Toyo University, they do not just make friends with students from Japan. They make friends with students from around the world. Each year, the size and diversity of Toyo University's international study abroad body increases, thanks in part to the high student satisfaction and overwhelming positive recommendations from our alumni. International students will have opportunities to participate in various cultural activities and event (see page 17). By studying abroad at the University, they can join a unique global network of bright and talented international students.

Incoming Study Abroad Program Students by Year (2016-2023)



Country Share (2023)

United States	27.4%
China	11.3%
France	10.7%
Taiwan	8.8%
Korea	7.0%
Italy	5.8%
Germany	4.0%
Australia	3.4%
Others	21.6%

### ▼ Further Information

[https://www.toyo.ac.jp/academics/international-exchange/prospective/exchange\\_program/](https://www.toyo.ac.jp/academics/international-exchange/prospective/exchange_program/)



## Toyo Short-term Programs: Summer & Winter

Toyo Short-term Programs offer Japanese language classes for beginners covering listening, speaking, reading and writing components, as well as interactive Japanese classes with Toyo students. The programs provide participants with various

### Customized Programs

On top of the Toyo Short-term Programs, we also arrange a bespoke program, in-person or online, featuring contents in both English and Japanese. Contents of the program can be arranged flexibly so that it can meet client's needs and interests (see below for an example itinerary). The students will also participate in Japanese

opportunities to enjoy Japanese culture through site visits and activities on campus. We deliver these two-weeks programs twice a year, in August and January.

language classes as assistants and join some fieldwork activities. The program fee varies depending on the number of participants, length of the program, accommodations, and activities involved. Please contact us directly at [mltsp@toyo.jp](mailto:mltsp@toyo.jp) for further information.

### Example schedule

Day 1	Orientation, campus tour and welcome party
Day 2	Classes (AM&PM)
Day 3	Classes (AM) and cultural activities (PM)
Day 4	Classes (AM&PM)
Day 5	Field trip
Day 6	Homestay outside Tokyo
Day 7	Homestay outside Tokyo

Day 8	Free day
Day 9	Classes (AM) and cultural activities (PM)
Day 10	Field trip
Day 11	Classes (AM) and cultural activities (PM)
Day 12	Classes (AM&PM)
Day 13	Final presentation and farewell party
Day 14	Departure from Tokyo

### Example:

- | Classes | Japanese culture, Japanese language, etc.
- | Activities | Japanese calligraphy, Tea ceremony, Sumo, Paper-making
- | Field Trips | Asakusa, Akihabara, Tokyo Skytree, Japanese gardens, etc.
- | Others | Company visits, homestay outside Tokyo, etc.



### ▼ Latest Information

<https://www.toyo.ac.jp/academics/international-exchange/prospective/shortprogram/index.html>



# NEST (*Nihongo* for Exchange & International Students at Toyo)

NEST is based on the Common European Framework of Reference for Languages (CEFR) and has classes ranging from level 1 (Beginner Level) to level 4 (Intermediate Level). We have established “theory” and “practice” classes to steadily improve Japanese language skills. We also offer skill-based courses as well as interactive classes that enable students to learn about Japanese culture and society. These courses are designed to suit the diverse objectives and needs of international students.

## Integrated Japanese Theory/Practice

Integrated Japanese is aimed at zero-beginner to Intermediate level Japanese learners. In the Theory (Understanding) class, students will deepen their understanding of characters, vocabulary, and grammar. In the Practice (Activities) class, they will develop the ability to use these skills. The purpose is to cultivate a foundation that enables international students to develop the Japanese language skills needed to study at our university and live in Japan, and to deepen their learning in stages. Integrated Japanese Theory/Practice courses will be divided to the following four levels depending on the result of the placement test.

## Example time table

Period	Time	Mon.	Tue.	Wed.	Thu.
1	9:00 ∨ 10:30	Integrated Japanese (Theory)	Integrated Japanese (Practice)	Integrated Japanese (Theory)	Integrated Japanese (Practice)
2	10:40 ∨ 12:10	Japanese Writing	Project Work	Japanese Listening	Japanese Reading
Lunch hour					
3	13:00 ∨ 14:30		Japanese Culture and Society or Introduction to Japanology		

### Level 1 (Beginner Level)

For students with zero background in Japanese language.  
Approx. A1-1 (CEFR)

### Level 2 (Elementary Level)

For students who are able to use and understand minimal Japanese language.  
Approx. A1-2 (CEFR)

### Level 3 (Pre-Intermediate Level)

For students with upper elementary-level background in Japanese language.  
Approx. A2 (CEFR)

### Level 4 (Intermediate Level)

For students with pre-intermediate-level background in Japanese language.  
Approx. B1 (CEFR)

## Course Contents of the Skill-based Courses

Japanese Reading	Students study Japanese expressions and compositional structure through intensive reading and writing. In addition to activities which build on previously learned expressions, students move progressively through more challenging materials.
Japanese Listening	While intensively working to improve listening comprehension, students study oral expressions used in various daily activities.
Japanese Writing	Students develop effective and comprehensive writing skills by practicing sentences that use words and expressions with kanji.
Project Work	Students gather information on topics of their choice through library research and field surveys. They then analyze the information and present it as written essays and oral presentations. While students may need to learn a limited number of new expressions, they primarily focus on creatively using expressions they have already studied.


## Japanese Culture and Society

Students can study various aspects of Japanese life and society through Japanese culture. Level 1-2 students can take this course.

## Introduction to Japanology

Students can study about Japanese language, cultures and society. Level 3 and 4 students can take this course.

### ▼ Further Information

 [https://www.toyo.ac.jp/academics/international-exchange/prospective/exchange\\_program/nest/index.html](https://www.toyo.ac.jp/academics/international-exchange/prospective/exchange_program/nest/index.html)





# Extracurricular Japanese Courses

Toyo University offers several extracurricular courses suited to various levels and goals.

All courses are free for international students of Toyo University.

## Academic Japanese Beginner Courses

### Japanese STEP UP Courses

We offer about 15 programs for various purposes, including conversation, grammar, JLPT test preparation, and job search, from beginner to advanced level in small batches of 10 or fewer students.

### Japanese Writing Programs

We offer one-to-one lessons that focus on “writing,” from beginner to advanced level, following the Toyo University original curriculum.

## Business Japanese Courses

### BJT (Business Japanese Proficiency Test) Preparation Courses

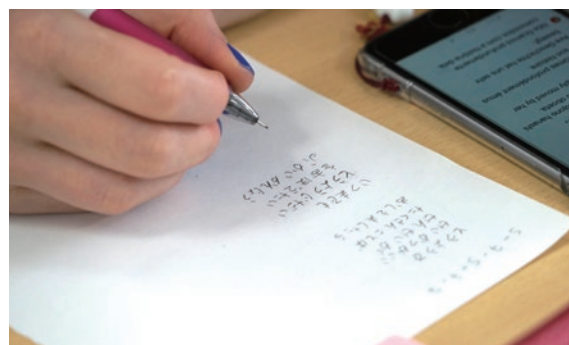
Practical courses of 90 minutes x eight sessions aiming to increase BJT test scores.

### Business Japanese Special Courses & Advanced Courses

There are 14 special courses and six advanced courses to select from. Students can learn business Japanese and skills from experts in various fields.

### Business Japanese (on-demand) Courses

We currently offer three courses, “Introduction to Business Japanese,” “Preparation Course for BJT Business Japanese Proficiency Test,” “Business Japanese Teaching.” Students are free to make their own course plan and take courses any time within the period.



#### ▼ Latest Information

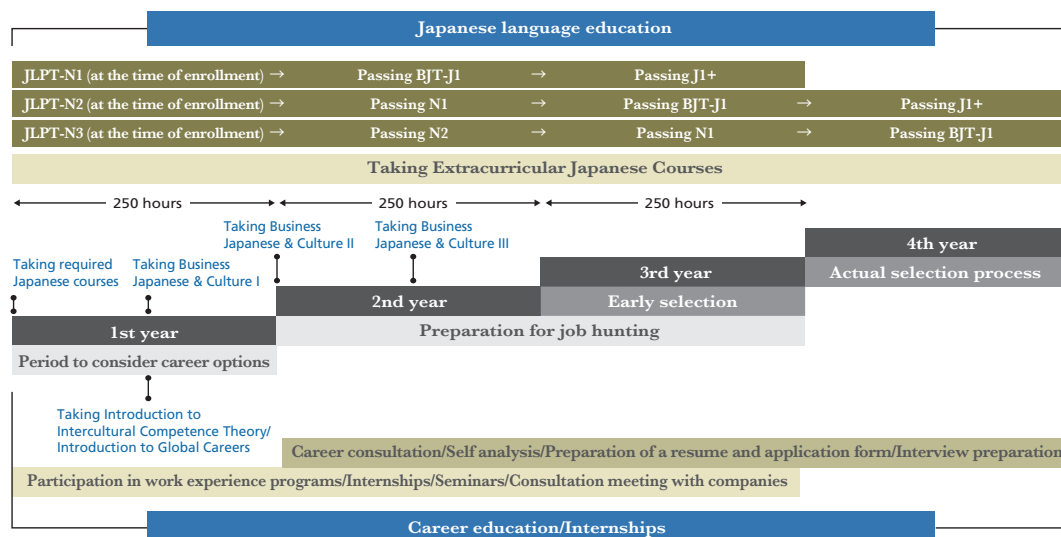
[https://www.toyo.ac.jp/academics/international-exchange/enroll/japanese\\_program/](https://www.toyo.ac.jp/academics/international-exchange/enroll/japanese_program/)



# Career Support for International Students

Toyo University offers additional programs for international students to prepare for developing careers in Japan. Students can take business language courses and job hunting seminars.

Internship opportunities in Tokyo and other parts of Japan are also available to get a hands-on experience of working in Japan.



Employment

[https://www.toyo.ac.jp/academics/international-exchange/itepp\\_jp/](https://www.toyo.ac.jp/academics/international-exchange/itepp_jp/)



---

# Japanese Cultural Events and Interactions with Japanese Students

**International students at Toyo University have unlimited opportunities to make friends with local students and experience Japanese culture firsthand.**

---

## English Community Zone (ECZ)

ECZ is a lounge type space on campus where the Toyo University students and international students get together to relax, play games, listen to music, and hang out in English. In addition, ECZ hosts evening events every month, such as a Halloween party, pajama party, and Christmas party. ECZ is the perfect place to unwind and make new friends.



---

## Language Exchange Program (LEP)

All interested study abroad program students are connected through LEP, the Toyo University student volunteers who help the students practice their Japanese and better understand Japanese culture.

---

## International Student Meeting (ISM)

ISM is an online event where students at partner universities and the Toyo University students get together and discuss various topics using Japanese or English. Participants will be divided into small groups and exchange thoughts and ideas.

---

## Japanese Cultural Events

From attending having a Japanese calligraphy experience and wearing authentic Japanese kimono to faring a full-sized sumo wrestler—Toyo University offers varieties of opportunities to experience Japanese culture.



Kimono wearing



Japanese calligraphy experience



Participating in a training session with the University's sumo team

---

## Weekend Homestay

Students can experience authentic Japanese life by spending the weekend doing a homestay with a Japanese family in the countryside. Enjoying home-cooked meals, harvesting vegetables, hiking in the countryside, and soaking in hot springs are just a few of the activities that make the homestay one of the international students' favorite experiences during their time in Japan.



---

## Clubs

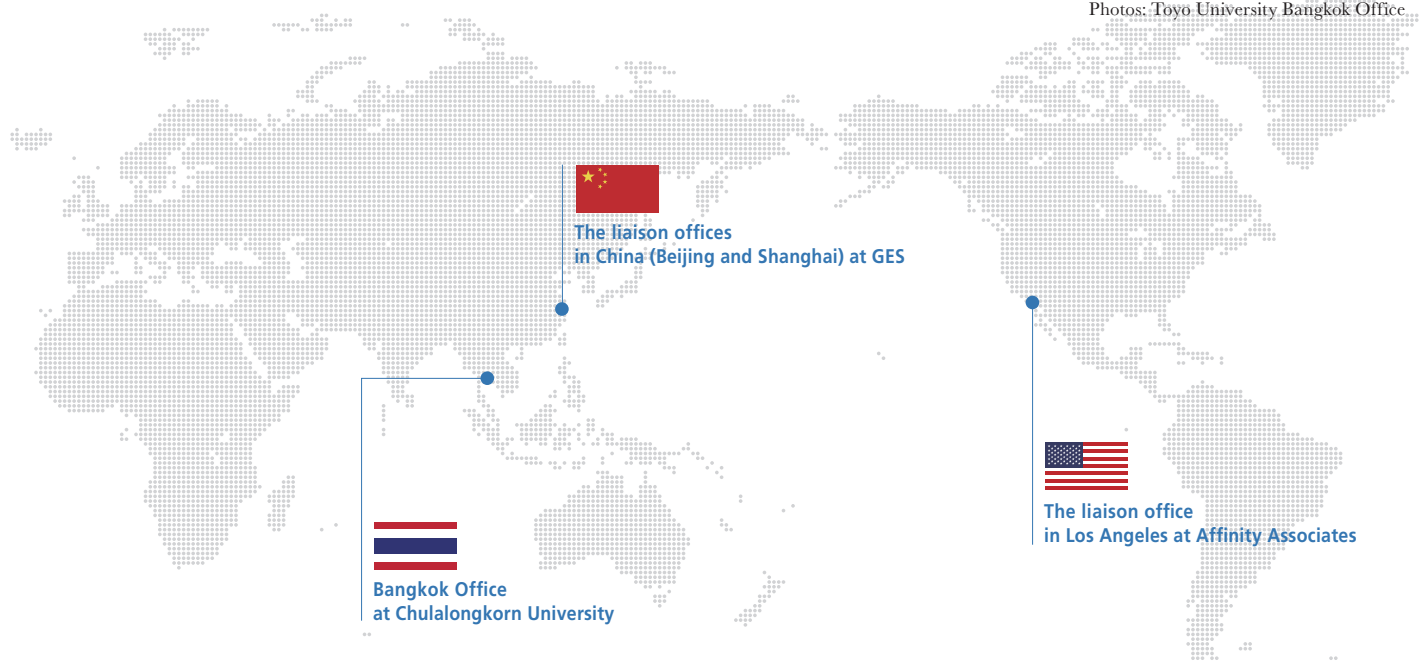
Toyo University strongly believes that student activities contribute to the enrichment of campus life. With 77 athletic clubs and 229 other student clubs, ever you can find a group of students that share their interests.

# Overseas Offices

Toyo University has overseas offices and liaison offices in four locations in three countries. The primary purpose of our overseas offices is to expand and strengthen our international partnerships, through facilitating joint research projects, organizing academic exchanges, arranging visits by professors and students, and coordinating internships. The University continues to strengthen and diversify our global network.



Photos: Toyo University Bangkok Office



# Introduction Videos of Toyo University

Toyo University introduction movie:  
Toyo U x To You

<https://youtu.be/7EWjMnB28ks>



For prospective international degree-seeking students  
Research, Education and Student Life at Toyo University

<https://youtu.be/0quTQOJJGzI>



<https://youtu.be/AyMqOwGsU3M>  
(with Chinese subtitle)



For prospective study abroad program students:  
Study Abroad at Toyo University

<https://youtu.be/zL5cdo1KUyY>



<https://youtu.be/-8Gi6cTACv4>  
(with Japanese subtitle)





# Partner Institutions and Consortia [As of March 31, 2024]

## Institutions

### Australia

CQUniversity  
Curtin University  
Deakin University  
International College of Management, Sydney  
Monash University  
Southern Cross University  
University of Newcastle  
University of Queensland  
University of the Sunshine Coast  
Wollongong University

### Austria

FHWien der WKW/University of Applied Sciences  
for Management and Communication  
Paris-Lodron-University Salzburg  
Salzburg University of Applied Sciences  
University of Applied Sciences Upper Austria  
University of Vienna

### Bangladesh

Bangladesh University of Engineering and Technology  
Shahjalal University of Science & Technology  
University of Dhaka

### Belgium

Thomas More University of Applied Sciences  
University of Liège  
VIVES University of Applied Sciences

### Brazil

University of Campinas  
University of São Paulo

### Bulgaria

Plodiv University  
Sofia University St. Kliment Ohridski  
Technical University of Sofia

### Cambodia

Royal University of Phnom Penh

### Canada

Acadia University  
Brock University  
Centennial College  
Concordia University of Edmonton  
Douglas College  
George Brown College  
Kwantlen Polytechnic University  
Lakehead University  
Okanagan College  
Saint Mary's University  
St. Lawrence College  
Thompson Rivers University  
University of Lethbridge  
University of Manitoba  
University of Saskatchewan  
University of Victoria  
University of Winnipeg  
Vancouver Island University

### Chile

Fundación Centro MERI

### China

Beijing Foreign Studies University  
Beijing Institute of Technology  
Beijing Language and Culture University  
Bohai University  
The Chinese University of Hong Kong, Shenzhen  
Dalian Maritime University  
Dalian Neusoft University of Information  
Dalian University of Foreign Languages

Dalian University of Technology  
East China Normal University  
Fudan University  
Henan Institute of Science and Technology  
Jilin University  
Jinan University  
Liaoning Law School  
Liaoning University  
Macau University of Science and Technology  
Nankai University  
North China University of Science and Technology  
North China University of Technology  
Northwest University of Political Science and Law  
Ocean University of China  
Renmin University of China  
Shandong University  
Shanghai International Studies University  
Shanghai University  
Shanghai University of Engineering Science  
Shanghai University of International Business  
and Economics  
Shanxi Medical University  
Shanxi University  
Sias International University  
Sichuan University  
Southwestern University of Finance and Economics  
Taiyuan University of Science and Technology  
University of International Business and Economics  
University of Nottingham Ningbo China  
Wenzhou University  
Xi'an International Studies University  
Xiamen University

### China (Hong Kong)

Hong Kong Metropolitan University  
Hong Kong Polytechnic University

### Finland

Haaga-Helia University of Applied Sciences  
JAMK University of Applied Sciences  
Lahden Kansanopisto/Lahti Folk High School  
Metropolia University of Applied Sciences

### France

Catholic University of Paris  
Institut d'Études Politiques de Toulouse  
Sorbonne University  
The University of Rennes 1  
Université de Franche-Comté  
University of Lille  
University of Nantes  
University of Strasbourg  
Université de Strasbourg EMS  
Université de Strasbourg IEP  
Université Paris Cité  
University Catholique de Lille  
University of Cergy-Pontoise  
University Paris 8

### Georgia

Free University of Tbilisi

### Germany

Johannes Gutenberg University Mainz  
Munich University of Applied Sciences  
Philipps-Universität Marburg  
University of Bayreuth

### Hungary

Budapest Metropolitan University  
Budapest University of Technology and Economics

### India

Banaras Hindu University  
C.M.S. College  
Indian Institute of Technology Delhi  
Indian Institute of Technology Madras  
Jawaharlal Nehru University  
Maharishi Mahesh Yogi Vedic  
Vishwavidyalaya (University)  
Mangalam Educational Society,  
Mangalam College of Engineering  
Ramaiah Institute of Technology  
Sree Chitra Tirunal Institute for Medical  
Sciences and Technology  
Swami Vivekananda Yoga Anusandhana  
Samsthana (S-VYASA) University  
University of Kerala

### Indonesia

Darma Persada University  
Hasanuddin University  
Institut Hindu Dharma Negeri Denpasar  
Maranatha Christian University  
Parahyangan Catholic University  
The Institute of Technology Sepuluh Nopember  
The University of Syiah Kuala  
Universitas Gadjah Mada  
Universitas Sebelas Maret

### Ireland

Dublin City University  
University of Limerick

### Italy

Ca' Foscari University of Venice  
Polytechnic University of Milan  
Sapienza University of Rome  
University of Bologna  
University of Camerino  
University of Florence  
University of Salento  
University of Turin

### Kenya

Jomo Kenyatta University of Agriculture  
and Technology

### Lithuania

Vilnius University  
Vytautas Magnus University

### Malaysia

HELP University  
Sunway University  
Taylor's University  
Universiti Kebangsaan Malaysia  
Universiti Teknologi Mara  
University of Technology, Malaysia  
University of Malaya  
University of Nottingham Malaysia

### Mexico

National School of Higher Education, León  
(ENES, León), the National Autonomous  
University of Mexico (UNAM)  
Universidad de Monterrey

### Netherlands

Amsterdam University of Applied Sciences  
Fontys University of Applied Sciences  
HAN University of Applied Sciences  
HZ University of Applied Sciences  
Rotterdam University, Rotterdam Business School  
Saxion University of Applied Sciences  
Tio University of Applied Sciences



■ Black: University Wide  
 ■ Blue: Faculty Wide  
 ■ Orange: Both

## New Zealand

Unitec Institute of Technology  
 University of Otago

## Norway

Oslo Metropolitan University  
 UiT The Arctic University of Norway  
 University of Tromsø

## Paraguay

National University of Asuncion

## Philippines

Caraga State University  
 Cebu Technological University  
 De La Salle University - Dasmariñas  
 Father Saturnino Urios University  
 Mapúa University  
 Philippine University Open University  
 Saint Joseph Institute of Technology  
 University of Ateneo De Manila  
 University of San Jose - Recoletos  
 University of the Philippines Open University  
 University of the Philippines Cebu  
 University of the Philippines Diliman

## Poland

Cracow University of Economics  
 Wroclaw University of Economics

## Romania

Bucharest University of Economic Studies  
 Politehnica University of Timisoara  
 University of Bucharest

## Slovenia

University of Ljubljana

## South Korea

Busan University of Foreign Studies  
 Catholic Sangji College  
 Chonju National University of Education  
 Daegu University  
 Dongguk University  
 Geumgang University  
 Hankuk University of Foreign Studies  
 Hannam University  
 Hanyang University  
 Inha University  
 Konkuk University  
 Kookmin University  
 Kyung Hee University  
 Sejong University  
 Sungkyul University  
 Sungkyunkwan University  
 Sungshin Women's University  
 Wonkwang University

## Spain

University of Deusto  
 University of Vic-Central University of Catalonia

## Sweden

KTH Royal Institute of Technology  
 Linnaeus University

## Switzerland

University of Lucerne  
 University of Zurich

## Taiwan

Chaoyang University of Technology  
 Chinese Culture University  
 Chung Yuan Christian University  
 Fo Guang University  
 Fu Jen Catholic University  
 Hungkuang University  
 I-Shou University  
 Lunghwa University of Science and Technology  
 National Chung Hsing University  
 Providence University  
 Shih Chien University  
 Tunghai University  
 Wenzao Ursuline University of Languages

## Thailand

Asian Institute of Technology  
 Assumption University  
 Chiang Mai University  
 Chulalongkorn University  
 Phranakhon Si Ayutthaya Rajabhat University  
 Srinakharinwirot University  
 Thai-Nichi Institute of Technology  
 Thammasat University

## Turkey

Ankara University

## Ukraine

Taras Shevchenko National University of Kyiv  
 Borys Grinchenko Kyiv University  
 National Aviation University

## United Kingdom

Cardiff University  
 Coventry University  
 Hertford College  
 Regent's University London  
 Ulster University  
 University of Central Lancashire  
 University of Edinburgh  
 University of Kent  
 University of Liverpool  
 University of London  
 University of Northumbria at Newcastle  
 University of Oxford  
 University of Warwick  
 University of Winchester  
 York St John University

## United States

Augustana College  
 Boston University  
 California State University Bakersfield  
 California State University Channel Islands  
 California State University Dominguez Hills  
 California State University Monterey Bay  
 California State University Stanislaus  
 Chatham University  
 Chicago State University  
 College of New Jersey  
 College of the Desert  
 Flathead Valley Community College  
 Florida Atlantic University  
 Fox Valley Technical College  
 Georgia Institute of Technology  
 Hartwick College  
 Hawai'i Pacific University  
 Johnson & Wales University  
 Kent State University  
 Lewis-Clark State College  
 Lindsey Wilson College  
 Maharishi International University  
 Maryville University

## Minnesota State University, Mankato

Northwest Missouri State University  
 Northwest University  
 Oregon State University  
 Pace University  
 Portland State University  
 Presbyterian College  
 Purdue University Northwest  
 Queens University of Charlotte  
 San Francisco State University  
 State University of New York Brockport  
 University of California, San Diego Extension  
 University of California, Santa Barbara  
 University of Colorado Colorado Springs  
 University of Hawaii at Hilo  
 University of Hawai'i Kapi'olani Community College  
 University of Houston  
 University of Missouri-St. Louis  
 University of Montana  
 University of Nebraska at Kearney  
 University of Nevada, Las Vegas  
 University of New Mexico  
 University of North Alabama  
 University of North Texas  
 University of South Alabama  
 University of Tennessee, Knoxville  
 University of Texas at Dallas  
 University of Washington Continuum College  
 West Texas A&M University  
 Western Kentucky University  
 Western Michigan University  
 Winona State University

## Uzbekistan

"Silk Road" International University of Tourism  
 Tashkent State Institute of Oriental Studies  
 Turin Polytechnic University in Tashkent  
 Uzbekistan State World Languages University

## Viet Nam

Banking Academy of Vietnam  
 Foreign Trade University  
 FPT University  
 Hanoi Architectural University  
 Hue University  
 National University of Civil Engineering  
 Vietnam Japan University  
 Vietnam National University, Ho Chi Minh City

## Consortia

CIS Abroad (USA)  
 IES Abroad (USA)  
 International Association of Universities (AIU) (France)  
 International Student Exchange Programs (ISEP) (USA)  
 Knowledge Exchange Institute (KEI) (USA)  
 University Mobility in Asia and the Pacific (UMAP) (Canada)

## Organization

Chinese Service Center for Scholarly Exchange (China)  
 Institute of Nuclear Research of the Hungarian Academy of Sciences Hungary (Hungary)  
 Fondazione Romualdo Del Bianco (Italy)  
 The National Council for Public-Private Partnerships (USA)  
 The United Nations Economic Commission for Europe (Switzerland)  
 The Washington Center (USA)  
 Urban Land Institute, Development Bank of Japan (USA)  
 National Institute of Fundamental Studies (Sri Lanka)  
 Sevanatha Urban Resource Centre (Sri Lanka)  
 Vietnam Institute for Urban and Rural Planning (Vietnam)

# Tuition and Fees [As of AY2025]

The breakdown of payment below is as of AY2025 and may be subject to change for the AY2026.

## Undergraduate

(unit:JP yen)

Faculties	Departments	Academic fees					Total fee for the year of admission	The second year and after (reference)
		Admission fee	Tuition	Facility fee	Lab fee	Equipment fee		
Letters, Economics Business Administration, Law		250,000	790,000	220,000	—	—	1,260,000	1,010,000
Sociology	Sociology	250,000	790,000	220,000	—	—	1,260,000	1,010,000
	Media and Communications	250,000	790,000	220,000	—	10,000	1,270,000	1,020,000
	Social Psychology Global Diversity Studies	250,000	790,000	220,000	—	15,000	1,275,000	1,025,000
Global and Regional Studies International Tourism Management		250,000	860,000	220,000	—	—	1,330,000	1,080,000
Information Networking for Innovation and Design		250,000	1,100,000	320,000	—	—	1,670,000	1,420,000
Design for Welfare Society	Social Welfare Studies	250,000	830,000	240,000	40,000	—	1,360,000	1,110,000
	Child Studies							
	Human Environment Design	250,000	890,000	300,000	100,000	—	1,540,000	1,290,000
Health and Sports Sciences	Health and Sports Sciences	250,000	870,000	300,000	80,000	—	1,500,000	1,250,000
	Nutritional Sciences	250,000	920,000	300,000	80,000	—	1,550,000	1,300,000
Science and Engineering		250,000	1,090,000	260,000	85,000	—	1,685,000	1,435,000
Information Sciences and Arts		250,000	1,030,000	260,000	40,000	—	1,580,000	1,330,000
Life Sciences, Food and Nutritional Sciences		250,000	1,020,000	360,000	80,000	—	1,710,000	1,460,000

## Graduate School

(unit:JP yen)

Graduate Schools/Courses		Programs	Academic fees					
			Admission fee		Tuition	Facility fee	Lab fee	Total fee for the year of admission
Letters, Sociology, Law, Business Administration, Economics, Global and Regional Studies, International Tourism Management, Social Welfare, Human Life Design		Master	Toyo Graduates	—	450,000	90,000	—	540,000
			Others	270,000	450,000	90,000	—	810,000
		Doctor	Toyo Graduates	—	450,000	70,000	—	520,000
			Others	270,000	450,000	70,000	—	790,000
Business Administration	Business, Accounting and Finance; Concentration in SME Consultant Certification	Master	Toyo Graduates	—	900,000	90,000	160,000	1,150,000
			Others	270,000	900,000	90,000	160,000	1,420,000
Economics	Public-Private-Partnership	Standard Program	Toyo Graduates	—	600,000	90,000	—	690,000
			Others	270,000	600,000	90,000	—	960,000
		Professional Intensive Program	Toyo Graduates	—	990,000	90,000	—	1,080,000
			Others	270,000	990,000	90,000	—	1,350,000
Human Life Design	Human Environment Design	Master	Toyo Graduates	—	450,000	90,000	70,000	610,000
			Others	270,000	450,000	90,000	70,000	880,000
Health and Sports Sciences	Health and Sports Sciences	Doctor	Toyo Graduates	—	450,000	70,000	70,000	590,000
			Others	270,000	450,000	70,000	70,000	860,000
Science and Engineering, Information Sciences and Arts, Life Sciences, Food and Nutritional Sciences, Nutritional Science		Master	Toyo Graduates	—	550,000	130,000	120,000	800,000
			Others	270,000	550,000	130,000	120,000	1,070,000
		Doctor	Toyo Graduates	—	550,000	80,000	120,000	750,000
			Others	270,000	550,000	80,000	120,000	1,020,000
Information Networking for Innovation and Design		Master	Toyo Graduates	—	550,000	250,000	—	800,000
			Others	270,000	550,000	250,000	—	1,070,000
		Doctor	Toyo Graduates	—	550,000	200,000	—	750,000
			Others	270,000	550,000	200,000	—	1,020,000

# Scholarships for International Students

## Toyo SDGs Ambassador Scholarship for International Students

Toyo University offers a full scholarship opportunity to international students who are interested in initiating activities related to the UN's Sustainable Development Goals (SDGs or Global Goals). The University declared the Charter of Conduct for SDGs, which raises awareness toward sustainable development as its community. This Ambassador Program is intended to strengthen its commitment in

sustainable development further by offering financial aids and other kinds of support to international students who can act as leaders to achieve the SDGs. SDGs Ambassadors are responsible to organize and host events or learning opportunities where students can learn about and deepen understanding about the SDGs.

Eligibility	Undergraduate students
Number of spots	20 students/year
Financial support	100% tuition waiver for the first year / 60-100% tuition waiver for from the second to fourth year (the percentage is decided based on GPA) / Dormitory fees covered by the university for four years*. * To receive the full amount of waiver, students must also apply for the Tuition Reduction Scholarship.
Other support	SDGs tutor, on-campus part-time opportunities, support for learning Japanese
Responsibilities	Create an SDGs action plans and implement them (organizing/joining SDGs-related events, study groups, volunteer activities)

## The Top Leading Students Scholarship of Toyo University Graduate Schools

This is a new full scholarship opportunity available to Master's students that will be launched in AY2024. We will provide selected students with

financial and student life support.

Eligibility	Master's students
Number of spots	10 students/year
Financial support	100% tuition waiver for two years / monthly stipend of ¥120,000 may be provided
Responsibilities	Participation in on-campus research, education part-time work, and other academic cross-field exchange activities

## Scholarships Available for International Students

Scholarship	Allotments	Undergrad.	Grad.	Eligibility
Tuition Reduction Scholarship	For undergraduates: 20%-40% of tuition For graduate students: 30% of tuition	●	●	◆ Status of Residence: Student * In selecting the recipients, academic grades and financial conditions are considered.
Masajuro Shiokawa Scholarship	¥100,000/month (¥1,200,000/year)	●	●	◆ Status of Residence: Student ◆ Outstanding academic records
Toyo University Scholarship for Academic Excellence	¥300,000/year	●	×	◆ Academic year: second to fourth ◆ Outstanding academic records, achievements and personality
Toyo University Graduate School Scholarship	¥300,000/year	×	●	◆ Graduate students with excellent academic performance and personality

### ▼ Further Information

[https://www.toyo.ac.jp/academics/international-exchange/enroll/international\\_scholarship/](https://www.toyo.ac.jp/academics/international-exchange/enroll/international_scholarship/)



## Possible Combination of the Scholarships

	Tuition Reduction	Masajuro Shiokawa	Academic Excellence	SDGs Ambassador
Tuition Reduction Scholarship	—	●	●	●
Masajuro Shiokawa Scholarship	●	—	×	×
Toyo University Scholarship for Academic Excellence	●	×	—	●





## Degree Programs

### Undergraduate Programs

🌐 <http://www.toyo.ac.jp/nyushi/en/>

🏢 Admissions Office

✉️ [nyushi@toyo.jp](mailto:nyushi@toyo.jp)

### Graduate Programs

🌐 <https://www.toyo.ac.jp/academics/gadmissions/>

Hakusan Campus

✉️ [mldaig@toyo.jp](mailto:mldaig@toyo.jp)

Akabanedai Campus (INIAD)

✉️ [ml-iniad-em@toyo.jp](mailto:ml-iniad-em@toyo.jp)

Akabanedai Campus (WELLB-HELSP0)

✉️ [mlags@toyo.jp](mailto:mlags@toyo.jp)

Kawagoe Campus

✉️ [mlkdaigakuin@toyo.jp](mailto:mlkdaigakuin@toyo.jp)

Asaka Campus

✉️ [mlsakakyomu@toyo.jp](mailto:mlsakakyomu@toyo.jp)

## Non-Degree Programs

🌐 <https://www.toyo.ac.jp/academics/international-exchange/prospective/>

🏢 International Affairs Office

✉️ [ml-intl@toyo.jp](mailto:ml-intl@toyo.jp)

